



GABBR2 (Phospho Ser893) rabbit pAb

Cat No.:ES20184

For research use only

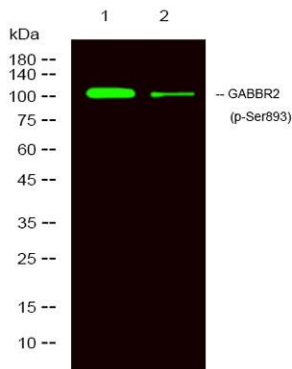
Overview

Product Name	GABBR2 (Phospho Ser893) rabbit pAb
Host species	Rabbit
Applications	WB; ELISA
Species Cross-Reactivity	Human;Mouse;Rat
Recommended dilutions	WB 1:1000-2000 ELISA 1:5000-20000
Immunogen	Synthesized peptide derived from human GABBR2 (Phospho Ser893)
Specificity	This antibody detects endogenous levels of Human,Mouse,Rat GABBR2 (Phospho Ser893)
Formulation	Liquid in PBS containing 50% glycerol, 0.5% BSA and 0.02% sodium azide.
Storage	Store at -20°C. Avoid repeated freeze-thaw cycles.
Protein Name	GABBR2 (Phospho Ser893)
Gene Name	GABBR2 GPR51 GPRC3B
Cellular localization	Cell membrane ; Multi-pass membrane protein . Cell junction, synapse, postsynaptic cell membrane ; Multi-pass membrane protein . Coexpression of GABBR1 and GABBR2 is required for GABBR1 maturation and transport to the plasma membrane. In contrast, GABBR2
Purification	The antibody was affinity-purified from rabbit antiserum by affinity-chromatography using epitope-specific immunogen.
Clonality	Polyclonal
Concentration	1 mg/ml
Observed band	105kD
Human Gene ID	9568
Human Swiss-Prot Number	O75899
Alternative Names	Gamma-aminobutyric acid type B receptor subunit 2 (GABA-B receptor 2;GABA-B-R2;GABA-BR2;GABABR2;Gb2;G-protein coupled receptor 51;HG20)
Background	The multi-pass membrane protein encoded by this





gene belongs to the G-protein coupled receptor 3 family and GABA-B receptor subfamily. The GABA-B receptors inhibit neuronal activity through G protein-coupled second-messenger systems, which regulate the release of neurotransmitters, and the activity of ion channels and adenylyl cyclase. This receptor subunit forms an active heterodimeric complex with GABA-B receptor subunit 1, neither of which is effective on its own. Allelic variants of this gene have been associated with nicotine dependence.[provided by RefSeq, Jan 2010],



Western Blot analysis of 1 MCF-7 treated with LPS, 2 MCF7,using primary antibody at 1:1000 dilution. Secondary antibody(catalog#:RS23920) was diluted at 1:10000

