

Calpain 2 (Phospho Ser50) rabbit pAb

Cat No.:ES20175

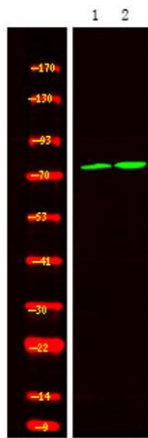
For research use only

Overview

Product Name	Calpain 2 (Phospho Ser50) rabbit pAb
Host species	Rabbit
Applications	WB; ELISA
Species Cross-Reactivity	Human;Mouse;Rat
Recommended dilutions	WB 1:1000-2000 ELISA 1:5000-20000
Immunogen	Synthesized peptide derived from human Calpain 2 (Phospho Ser50)
Specificity	This antibody detects endogenous levels of Human,Mouse,Rat Calpain 2 (Phospho Ser50)
Formulation	Liquid in PBS containing 50% glycerol, 0.5% BSA and 0.02% sodium azide.
Storage	Store at -20°C. Avoid repeated freeze-thaw cycles.
Protein Name	Calpain 2 (Phospho Ser50)
Gene Name	CAPN2 CANPL2
Cellular localization	Cytoplasm. Cell membrane. Translocates to the plasma membrane upon Ca(2+) binding.
Purification	The antibody was affinity-purified from rabbit antiserum by affinity-chromatography using epitope-specific immunogen.
Clonality	Polyclonal
Concentration	1 mg/ml
Observed band	69kD
Human Gene ID	824
Human Swiss-Prot Number	P17655
Alternative Names	Calpain-2 catalytic subunit (EC 3.4.22.53;Calcium-activated neutral proteinase 2;CANP 2;Calpain M-type;Calpain large polypeptide L2;Calpain-2 large subunit;Millimolar-calpain;M-calpain)
Background	The calpains, calcium-activated neutral proteases, are nonlysosomal, intracellular cysteine proteases. The mammalian calpains include ubiquitous, stomach-specific, and muscle-specific proteins. The



ubiquitous enzymes consist of heterodimers with distinct large, catalytic subunits associated with a common small, regulatory subunit. This gene encodes the large subunit of the ubiquitous enzyme, calpain 2. Multiple heterogeneous transcriptional start sites in the 5' UTR have been reported. Two transcript variants encoding different isoforms have been found for this gene. [provided by RefSeq, Mar 2009],



Western Blot analysis of 1 A549 cell 2 LPS 100ng/mL 30min treated ,using primary antibody at 1:1000 dilution. Secondary antibody(catalog#:RS23920) was diluted at 1:10000

