



Kinesin-like Protein KIF1C (Phospho Ser1092) rabbit pAb

Cat No.:ES20166

For research use only

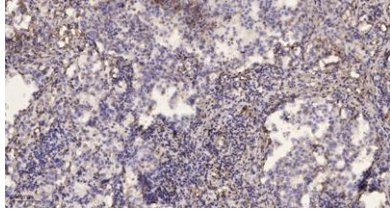
Overview

Product Name	Kinesin-like Protein KIF1C (Phospho Ser1092) rabbit pAb
Host species	Rabbit
Applications	WB;IHC
Species Cross-Reactivity	Human;Mouse;Rat
Recommended dilutions	WB 1:500-2000;IHC-p 1:50-300
Immunogen	Synthesized peptide derived from human Kinesin-like Protein KIF1C (Phospho Ser1092)
Specificity	This antibody detects endogenous levels of Human,Mouse,Rat Kinesin-like Protein KIF1C (Phospho Ser1092)
Formulation	Liquid in PBS containing 50% glycerol, 0.5% BSA and 0.02% sodium azide.
Storage	Store at -20°C. Avoid repeated freeze-thaw cycles.
Protein Name	Kinesin-like Protein KIF1C (Phospho Ser1092)
Gene Name	KIF1C KIAA0706
Cellular localization	Cytoplasm, cytoskeleton .
Purification	The antibody was affinity-purified from rabbit antiserum by affinity-chromatography using epitope-specific immunogen.
Clonality	Polyclonal
Concentration	1 mg/ml
Observed band	121kD
Human Gene ID	10749
Human Swiss-Prot Number	O43896
Alternative Names	Kinesin-like protein KIF1C
Background	kinesin family member 1C(KIF1C) Homo sapiens The protein encoded by this gene is a member of the kinesin-like protein family. The family members are microtubule-dependent molecular motors that transport organelles within cells and move chromosomes during cell division. Mutations in this

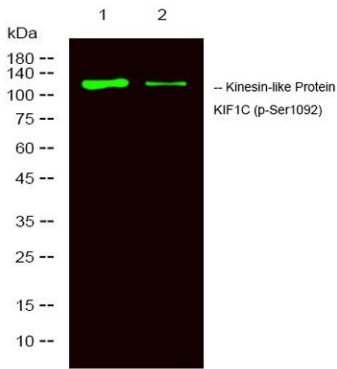


gene are a cause of spastic ataxia 2, autosomal recessive. [provided by RefSeq, May 2014],

Immunohistochemical analysis of paraffin-embedded human lung cancer. 1, Antibody was diluted at 1:200(4° overnight). 2, Tris-EDTA,pH9.0 was used for antigen retrieval. 3,Secondary antibody was diluted at 1:200(room temperature, 45min).



Western Blot analysis of mouse heart , rat heart,using primary antibody at 1:1000 dilution. Secondary antibody(catalog#:RS23920) was diluted at 1:10000



Western Blot analysis of various,using primary antibody at 1:1000 dilution. Secondary antibody(catalog#:RS23920) was diluted at 1:10000

