

# NFAT1 (Phospho Ser326) rabbit pAb

Cat No.:ES20145

For research use only

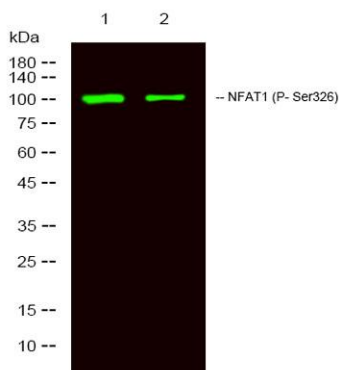
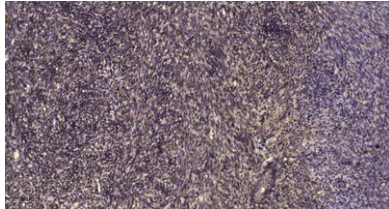
## Overview

Product Name	NFAT1 (Phospho Ser326) rabbit pAb
Host species	Rabbit
Applications	WB;ELISA;IHC
Species Cross-Reactivity	Human;Mouse;Rat
Recommended dilutions	WB 1:500-2000;IHC-p 1:50-300; ELISA 2000-20000
Immunogen	Synthesized peptide derived from human NFAT1 (Phospho Ser326)
Specificity	This antibody detects endogenous levels of Human,Mouse,Rat NFAT1 (Phospho Ser326)
Formulation	Liquid in PBS containing 50% glycerol, 0.5% BSA and 0.02% sodium azide.
Storage	Store at -20°C. Avoid repeated freeze-thaw cycles.
Protein Name	NFAT1 (Phospho Ser326)
Gene Name	NFATC2 NFAT1 NFATP
Cellular localization	Cytoplasm. Nucleus. Cytoplasmic for the phosphorylated form and nuclear after activation that is controlled by calcineurin-mediated dephosphorylation. Rapid nuclear exit of NFATC is thought to be one mechanism by which cells distinguish between sustained
Purification	The antibody was affinity-purified from rabbit antiserum by affinity-chromatography using epitope-specific immunogen.
Clonality	Polyclonal
Concentration	1 mg/ml
Observed band	100kD
Human Gene ID	4773
Human Swiss-Prot Number	Q13469
Alternative Names	Nuclear factor of activated T-cells, cytoplasmic 2 (NF-ATc2;NFATc2;NFAT pre-existing subunit;NF-ATp;T-cell transcription factor NFAT1)
Background	This gene is a member of the nuclear factor of activated T cells (NFAT) family. The product of this



gene is a DNA-binding protein with a REL-homology region (RHR) and an NFAT-homology region (NHR). This protein is present in the cytosol and only translocates to the nucleus upon T cell receptor (TCR) stimulation, where it becomes a member of the nuclear factors of activated T cells transcription complex. This complex plays a central role in inducing gene transcription during the immune response. Alternate transcriptional splice variants encoding different isoforms have been characterized. [provided by RefSeq, Apr 2012],

Immunohistochemical analysis of paraffin-embedded human uterus. 1, Antibody was diluted at 1:200(4° overnight). 2, Tris-EDTA,pH9.0 was used for antigen retrieval. 3,Secondary antibody was diluted at 1:200(room temperature, 45min).



Western Blot analysis of 1 MCF-7 treated with LPS, 2 MCF-7,using primary antibody at 1:1000 dilution. Secondary antibody(catalog#:RS23920) was diluted at 1:10000

