

Sp3 (Acetyl Lys551) rabbit pAb

Cat No.:ES20127

For research use only

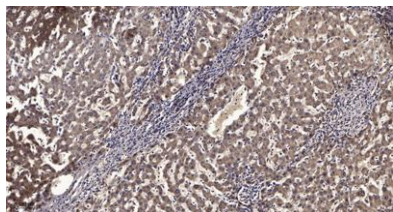
Overview

Product Name	Sp3 (Acetyl Lys551) rabbit pAb
Host species	Rabbit
Applications	WB;IHC
Species Cross-Reactivity	Human;Mouse
Recommended dilutions	WB 1:500-2000;IHC-p 1:50-300
Immunogen	Synthesized peptide derived from human Sp3 (Acetyl Lys551)
Specificity	This antibody detects endogenous levels of Human,Mouse Sp3 (Acetyl Lys551)
Formulation	Liquid in PBS containing 50% glycerol, 0.5% BSA and 0.02% sodium azide.
Storage	Store at -20°C. Avoid repeated freeze-thaw cycles.
Protein Name	Sp3 (Acetyl Lys551)
Gene Name	SP3
Cellular localization	Nucleus. Nucleus, PML body. Localizes to the nuclear periphery and in nuclear dots when sumoylated. Some localization in PML nuclear bodies.
Purification	The antibody was affinity-purified from rabbit antiserum by affinity-chromatography using epitope-specific immunogen.
Clonality	Polyclonal
Concentration	1 mg/ml
Observed band	85kD
Human Gene ID	6670
Human Swiss-Prot Number	Q02447
Alternative Names	Transcription factor Sp3 (SPR-2)
Background	This gene belongs to a family of Sp1 related genes that encode transcription factors that regulate transcription by binding to consensus GC- and GT-box regulatory elements in target genes. This protein contains a zinc finger DNA-binding domain and several transactivation domains, and has been





reported to function as a bifunctional transcription factor that either stimulates or represses the transcription of numerous genes. Transcript variants encoding different isoforms have been described for this gene, and one has been reported to initiate translation from a non-AUG (AUA) start codon. Additional isoforms, resulting from the use of alternate downstream translation initiation sites, have also been noted. A related pseudogene has been identified on chromosome 13. [provided by RefSeq, Feb 2010],



Immunohistochemical analysis of paraffin-embedded human liver cancer. 1, Antibody was diluted at 1:200(4° overnight). 2, Tris-EDTA,pH9.0 was used for antigen retrieval. 3,Secondary antibody was diluted at 1:200(room temperature, 45min).

