



# Kallikrein-14 (Cleaved-Ile25) rabbit pAb

Cat No.:ES20016

For research use only

## Overview

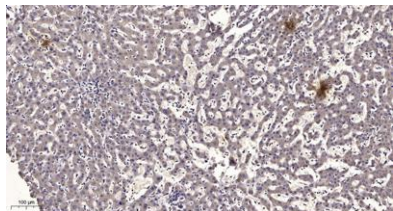
|                                 |  |
|---------------------------------|--|
| <b>Product Name</b>             | Kallikrein-14 (Cleaved-Ile25) rabbit pAb   |
| <b>Host species</b>             | Rabbit   |
| <b>Applications</b>             | WB;IHC   |
| <b>Species Cross-Reactivity</b> | Human;Mouse;Rat  |
| <b>Recommended dilutions</b>    | WB 1:500-2000;IHC-p 1:50-300   |
| <b>Immunogen</b>                | Synthesized peptide derived from human Kallikrein-14 (Cleaved-Ile25)   |
| <b>Specificity</b>              | This antibody detects endogenous levels of Human,Mouse,Rat Kallikrein-14 (Cleaved-Ile25, protein was cleaved amino acid sequence between 24-25 ) |
| <b>Formulation</b>              | Liquid in PBS containing 50% glycerol, 0.5% BSA and 0.02% sodium azide.  |
| <b>Storage</b>                  | Store at -20°C. Avoid repeated freeze-thaw cycles.   |
| <b>Protein Name</b>             | Kallikrein-14 (Cleaved-Ile25)  |
| <b>Gene Name</b>                | KLK14 KLKL6  |
| <b>Cellular localization</b>    | Secreted, extracellular space .  |
| <b>Purification</b>             | The antibody was affinity-purified from rabbit antiserum by affinity-chromatography using epitope-specific immunogen.                            |
| <b>Clonality</b>                | Polyclonal   |
| <b>Concentration</b>            | 1 mg/ml  |
| <b>Observed band</b>            | 26kD   |
| <b>Human Gene ID</b>            | 43847  |
| <b>Human Swiss-Prot Number</b>  | Q9P0G3   |
| <b>Alternative Names</b>        | Kallikrein-14 (hK14;EC 3.4.21.-;Kallikrein-like protein 6;KLK-L6)  |

## Background





**ELK Biotechnology**



Immunohistochemical analysis of paraffin-embedded human liver cancer. 1, Antibody was diluted at 1:200(4° overnight). 2, Tris-EDTA,pH9.0 was used for antigen retrieval. 3,Secondary antibody was diluted at 1:200(room temperature, 45min).



+86-27-59760950

[ELKbio@ELKbiotech.com](mailto:ELKbio@ELKbiotech.com)

[www.elkbiotech.com](http://www.elkbiotech.com)

23-2, No.388 Gaoxin 2nd Road,Wuhan East Lake Hi-tech Development Zone, Hubei , P.R.C