



ITGA2B (heavy chain, Cleaved-Leu32) rabbit pAb

Cat No.:ES20011

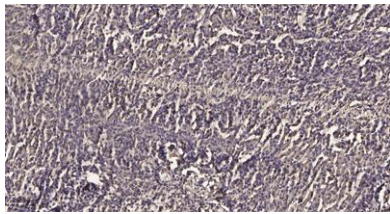
For research use only

Overview

Product Name	ITGA2B (heavy chain, Cleaved-Leu32) rabbit pAb
Host species	Rabbit
Applications	WB;IHC
Species Cross-Reactivity	Human;Rat;Mouse;
Recommended dilutions	WB 1:500-2000;IHC-p 1:50-300
Immunogen	Synthesized peptide derived from human ITGA2B (heavy chain, Cleaved-Leu32)
Specificity	This antibody detects endogenous levels of Human ITGA2B (heavy chain, Cleaved-Leu32, protein was cleaved amino acid sequence between 31-32)
Formulation	Liquid in PBS containing 50% glycerol, 0.5% BSA and 0.02% sodium azide.
Storage	Store at -20°C. Avoid repeated freeze-thaw cycles.
Protein Name	ITGA2B (heavy chain, Cleaved-Leu32)
Gene Name	ITGA2B GP2B ITGAB
Cellular localization	Membrane; Single-pass type I membrane protein.
Purification	The antibody was affinity-purified from rabbit antiserum by affinity-chromatography using epitope-specific immunogen.
Clonality	Polyclonal
Concentration	1 mg/ml
Observed band	95 110kD
Human Gene ID	3674
Human Swiss-Prot Number	P08514
Alternative Names	Integrin alpha-IIb (GPalpha IIb;GPIIb;Platelet membrane glycoprotein IIb;CD antigen CD41) [Cleaved into: Integrin alpha-IIb heavy chain; Integrin alpha-IIb light chain, form 1; Integrin alpha-IIb light chain, form 2]
Background	This gene encodes a member of the integrin alpha chain family of proteins. The encoded preproprotein is proteolytically processed to generate light and



heavy chains that associate through disulfide linkages to form a subunit of the alpha-IIb/beta-3 integrin cell adhesion receptor. This receptor plays a crucial role in the blood coagulation system, by mediating platelet aggregation. Mutations in this gene are associated with platelet-type bleeding disorders, which are characterized by a failure of platelet aggregation, including Glanzmann thrombasthenia. [provided by RefSeq, Jan 2016],



Immunohistochemical analysis of paraffin-embedded human meningioma. 1, Antibody was diluted at 1:200(4° overnight). 2, Tris-EDTA,pH9.0 was used for antigen retrieval. 3,Secondary antibody was diluted at 1:200(room temperature, 45min).

