



CLIP4 rabbit pAb

Cat No.:ES2000

For research use only

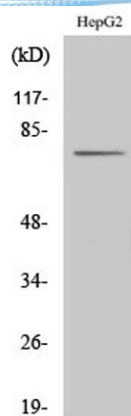
Overview

Product Name	CLIP4 rabbit pAb
Host species	Rabbit
Applications	WB;ELISA
Species Cross-Reactivity	Human;Rat;Mouse;
Recommended dilutions	Western Blot: 1/500 - 1/2000. ELISA: 1/40000. Not yet tested in other applications.
Immunogen	The antiserum was produced against synthesized peptide derived from human CLIP4. AA range:321-370
Specificity	CLIP4 Polyclonal Antibody detects endogenous levels of CLIP4 protein.
Formulation	Liquid in PBS containing 50% glycerol, 0.5% BSA and 0.02% sodium azide.
Storage	Store at -20°C. Avoid repeated freeze-thaw cycles.
Protein Name	CAP-Gly domain-containing linker protein 4
Gene Name	CLIP4
Cellular localization	integral component of membrane,
Purification	The antibody was affinity-purified from rabbit antiserum by affinity-chromatography using epitope-specific immunogen.
Clonality	Polyclonal
Concentration	1 mg/ml
Observed band	76kD
Human Gene ID	79745
Human Swiss-Prot Number	Q8N3C7
Alternative Names	CLIP4; RSNL2; CAP-Gly domain-containing linker protein 4; Restin-like protein 2
Background	similarity:Contains 3 ANK repeats.,similarity:Contains 3 CAP-Gly domains.,

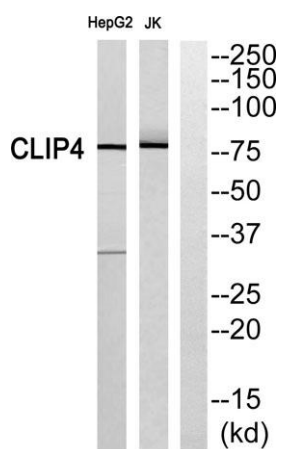




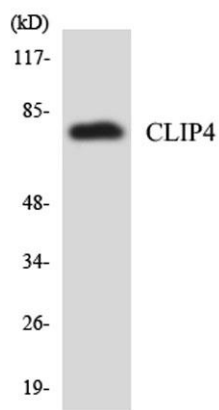
ELK Biotechnology



Western Blot analysis of various cells using CLIP4
Polyclonal Antibody



Western blot analysis of CLIP4 Antibody. The lane on the
right is blocked with the CLIP4 peptide.



Western blot analysis of the lysates from HUVEC cells
using CLIP4 antibody.



+86-27-59760950

ELKbio@ELKbiotech.com

www.elkbiotech.com

23-2, No.388 Gaoxin 2nd Road, Wuhan East Lake Hi-tech Development Zone, Hubei, P.R.C.