



Claudin-19 rabbit pAb

Cat No.:ES1986

For research use only

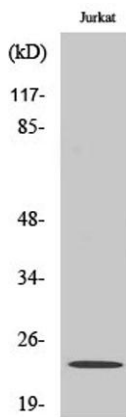
Overview

Product Name	Claudin-19 rabbit pAb
Host species	Rabbit
Applications	WB;ELISA
Species Cross-Reactivity	Human;Rat
Recommended dilutions	Western Blot: 1/500 - 1/2000. ELISA: 1/10000. Not yet tested in other applications.
Immunogen	The antiserum was produced against synthesized peptide derived from human CLDN19. AA range:81-130
Specificity	Claudin-19 Polyclonal Antibody detects endogenous levels of Claudin-19 protein.
Formulation	Liquid in PBS containing 50% glycerol, 0.5% BSA and 0.02% sodium azide.
Storage	Store at -20°C. Avoid repeated freeze-thaw cycles.
Protein Name	Claudin-19
Gene Name	CLDN19
Cellular localization	Cell junction, tight junction. Cell membrane; Multi-pass membrane protein.
Purification	The antibody was affinity-purified from rabbit antiserum by affinity-chromatography using epitope-specific immunogen.
Clonality	Polyclonal
Concentration	1 mg/ml
Observed band	23kD
Human Gene ID	149461
Human Swiss-Prot Number	Q8N6F1
Alternative Names	CLDN19; Claudin-19
Background	The product of this gene belongs to the claudin family. It plays a major role in tight junction-specific obliteration of the intercellular space, through calcium-independent cell-adhesion activity. Defects in this gene are the cause of hypomagnesemia renal with ocular involvement (HOMGO). HOMGO is a

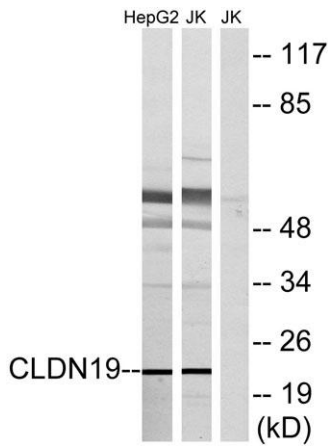




progressive renal disease characterized by primary renal magnesium wasting with hypomagnesemia, hypercalciuria and nephrocalcinosis associated with severe ocular abnormalities such as bilateral chorioretinal scars, macular colobomata, significant myopia and nystagmus. Alternatively spliced transcript variants encoding distinct isoforms have been identified for this gene. [provided by RefSeq, Jun 2010],



Western Blot analysis of various cells using Claudin-19 Polyclonal Antibody diluted at 1:500



Western blot analysis of lysates from Jurkat and HepG2 cells, using CLDN19 Antibody. The lane on the right is blocked with the synthesized peptide.

