



ChemR23 rabbit pAb

Cat No.:ES1969

For research use only

Overview

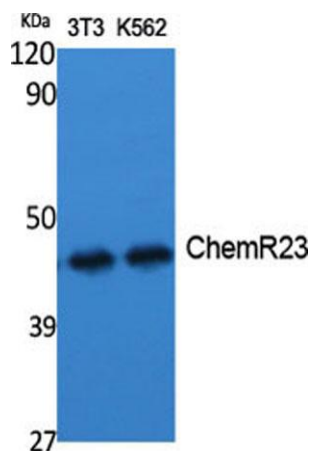
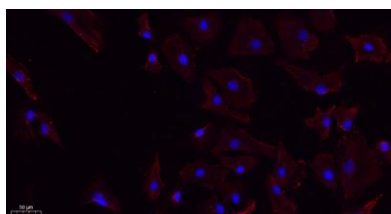
Product Name	ChemR23 rabbit pAb
Host species	Rabbit
Applications	WB;IHC;IF;ELISA
Species Cross-Reactivity	Human;Mouse;Rat
Recommended dilutions	Western Blot: 1/500 - 1/2000. IHC-p: 1:100-300 ELISA: 1/20000. IF 1:100-300 Not yet tested in other applications.
Immunogen	The antiserum was produced against synthesized peptide derived from human CMKLR1. AA range:221-270
Specificity	ChemR23 Polyclonal Antibody detects endogenous levels of ChemR23 protein.
Formulation	Liquid in PBS containing 50% glycerol, 0.5% BSA and 0.02% sodium azide.
Storage	Store at -20°C. Avoid repeated freeze-thaw cycles.
Protein Name	Chemokine-like receptor 1
Gene Name	CMKLR1
Cellular localization	Cell membrane ; Multi-pass membrane protein . Internalizes efficiently in response to RARRES2. .
Purification	The antibody was affinity-purified from rabbit antiserum by affinity-chromatography using epitope-specific immunogen.
Clonality	Polyclonal
Concentration	1 mg/ml
Observed band	42kD
Human Gene ID	1240
Human Swiss-Prot Number	Q99788
Alternative Names	CMKLR1; CHEMR23; DEZ; Chemokine-like receptor 1; G-protein coupled receptor ChemR23; G-protein coupled receptor DEZ
Background	developmental stage:Expressed during bone development.,function:Orphan receptor. Could be a chemotactic peptide receptor. May have a function



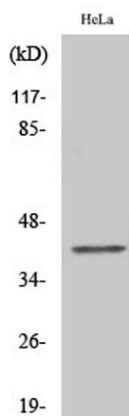


in bone metabolism. Acts as a coreceptor for several SIV strains (SIVMAC316, SIVMAC239, SIVMAC17E-FR and SIVSM62A), as well as a primary HIV-1 strain (92UG024-2).,similarity:Belongs to the G-protein coupled receptor 1 family.,tissue specificity:Prominently expressed in developing osseous and cartilaginous tissue. Also found in adult parathyroid glands.,

Immunofluorescence analysis of A549. 1,primary Antibody(red) was diluted at 1:200(4°C overnight). 2, Goat Anti Rabbit IgG (H&L) - Alexa Fluor 594 Secondary antibody was diluted at 1:1000(room temperature, 50min).3, Picture B: DAPI(blue) 10min.



Western Blot analysis of various cells using ChemR23 Polyclonal Antibody diluted at 1:1000

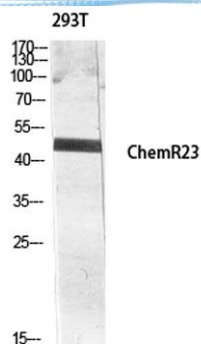


Western Blot analysis of COLO205 cells using ChemR23 Polyclonal Antibody diluted at 1:1000





ELK Biotechnology



Western blot analysis of 293T lysis using ChemR23 antibody. Antibody was diluted at 1:1000



+86-27-59760950

ELKbio@ELKbiotech.com

www.elkbiotech.com

23-2, No.388 Gaoxin 2nd Road, Wuhan East Lake Hi-tech Development Zone, Hubei, P.R.C