



CEP78 rabbit pAb

Cat No.:ES1953

For research use only

Overview

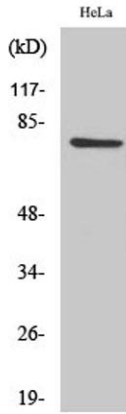
Product Name	CEP78 rabbit pAb
Host species	Rabbit
Applications	WB;IHC;IF;ELISA
Species Cross-Reactivity	Human;Mouse
Recommended dilutions	Western Blot: 1/500 - 1/2000. Immunohistochemistry: 1/100 - 1/300. ELISA: 1/20000. Not yet tested in other applications.
Immunogen	The antiserum was produced against synthesized peptide derived from human CEP78. AA range:301-350
Specificity	CEP78 Polyclonal Antibody detects endogenous levels of CEP78 protein.
Formulation	Liquid in PBS containing 50% glycerol, 0.5% BSA and 0.02% sodium azide.
Storage	Store at -20°C. Avoid repeated freeze-thaw cycles.
Protein Name	Centrosomal protein of 78 kDa
Gene Name	CEP78
Cellular localization	Cytoplasm, cytoskeleton, microtubule organizing center, centrosome . Cytoplasm, cytoskeleton, microtubule organizing center, centrosome, centriole . Cytoplasm, cytoskeleton, cilium basal body . Mainly localizes at the centriolar wall, but also found in th
Purification	The antibody was affinity-purified from rabbit antiserum by affinity-chromatography using epitope-specific immunogen.
Clonality	Polyclonal
Concentration	1 mg/ml
Observed band	80kD
Human Gene ID	84131
Human Swiss-Prot Number	Q5JTW2
Alternative Names	CEP78; C9orf81; Centrosomal protein of 78 kDa; Cep78





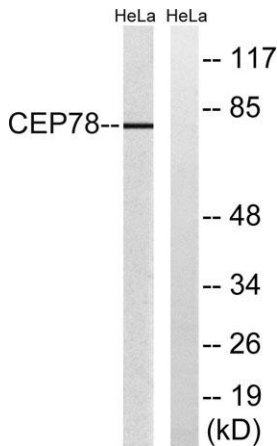
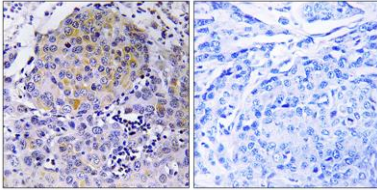
Background

similarity:Belongs to the CEP78 family.,similarity:Contains 3 LRR (leucine-rich) repeats.,



Western Blot analysis of various cells using CEP78 Polyclonal Antibody

Immunohistochemistry analysis of paraffin-embedded human breast carcinoma tissue, using CEP78 Antibody. The picture on the right is blocked with the synthesized peptide.



Western blot analysis of lysates from HeLa cells, using CEP78 Antibody. The lane on the right is blocked with the synthesized peptide.

