



# CdkL4 rabbit pAb

Cat No.:ES1945

For research use only

## Overview

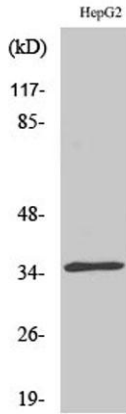
|                                 |  |
|---------------------------------|--|
| <b>Product Name</b>             | CdkL4 rabbit pAb   |
| <b>Host species</b>             | Rabbit   |
| <b>Applications</b>             | WB;IHC;IF;ELISA  |
| <b>Species Cross-Reactivity</b> | Human;Rat;Mouse;   |
| <b>Recommended dilutions</b>    | Western Blot: 1/500 - 1/2000.<br>Immunohistochemistry: 1/100 - 1/300.<br>Immunofluorescence: 1/200 - 1/1000. ELISA:<br>1/40000. Not yet tested in other applications.  |
| <b>Immunogen</b>                | The antiserum was produced against synthesized peptide derived from human CDKL4. AA range:266-315  |
| <b>Specificity</b>              | CdkL4 Polyclonal Antibody detects endogenous levels of CdkL4 protein.  |
| <b>Formulation</b>              | Liquid in PBS containing 50% glycerol, 0.5% BSA and 0.02% sodium azide.  |
| <b>Storage</b>                  | Store at -20°C. Avoid repeated freeze-thaw cycles.   |
| <b>Protein Name</b>             | Cyclin-dependent kinase-like 4   |
| <b>Gene Name</b>                | CDKL4  |
| <b>Cellular localization</b>    | Cytoplasm .  |
| <b>Purification</b>             | The antibody was affinity-purified from rabbit antiserum by affinity-chromatography using epitope-specific immunogen.  |
| <b>Clonality</b>                | Polyclonal   |
| <b>Concentration</b>            | 1 mg/ml  |
| <b>Observed band</b>            | 36kD   |
| <b>Human Gene ID</b>            | 344387   |
| <b>Human Swiss-Prot Number</b>  | Q5MAI5   |
| <b>Alternative Names</b>        | CDKL4; Cyclin-dependent kinase-like 4  |
| <b>Background</b>               | catalytic activity:ATP + a protein = ADP + a phosphoprotein.,domain:The [NKR]KIAXRE motif seems to be a cyclin-binding region.,similarity:Belongs to the protein kinase superfamily. CMGC Ser/Thr protein kinase family. |



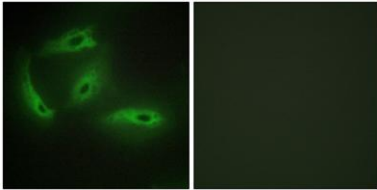


CDC2/CDKX subfamily.,similarity:Contains 1 protein kinase domain.,

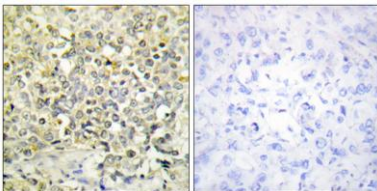
Western Blot analysis of various cells using CdkL4 Polyclonal Antibody diluted at 1:500



Immunofluorescence analysis of HeLa cells, using CDKL4 Antibody. The picture on the right is blocked with the synthesized peptide.

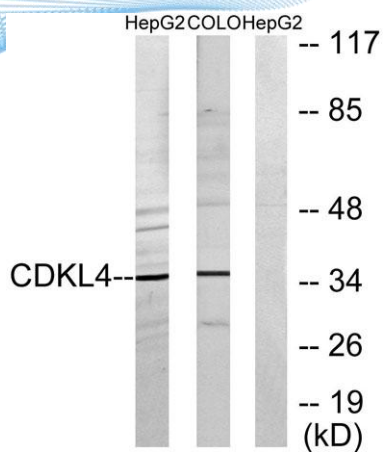


Immunohistochemistry analysis of paraffin-embedded human lung carcinoma tissue, using CDKL4 Antibody. The picture on the right is blocked with the synthesized peptide.





**ELK Biotechnology**



Western blot analysis of lysates from HepG2 and COLO205 cells, using CDKL4 Antibody. The lane on the right is blocked with the synthesized peptide.



+86-27-59760950

[ELKbio@ELKbiotech.com](mailto:ELKbio@ELKbiotech.com)

[www.elkbiotech.com](http://www.elkbiotech.com)

23-2, No.388 Gaoxin 2nd Road, Wuhan East Lake Hi-tech Development Zone, Hubei, P.R.C