



CD160 rabbit pAb

Cat No.:ES1896

For research use only

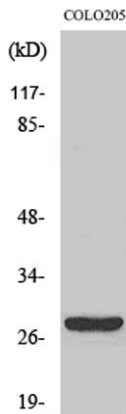
Overview

Product Name	CD160 rabbit pAb
Host species	Rabbit
Applications	WB;IF;ELISA
Species Cross-Reactivity	Human;Rat;Mouse;
Recommended dilutions	Western Blot: 1/500 - 1/2000. Immunofluorescence: 1/200 - 1/1000. ELISA: 1/20000. Not yet tested in other applications.
Immunogen	The antiserum was produced against synthesized peptide derived from human CD160. AA range:21-70
Specificity	CD160 Polyclonal Antibody detects endogenous levels of CD160 protein.
Formulation	Liquid in PBS containing 50% glycerol, 0.5% BSA and 0.02% sodium azide.
Storage	Store at -20°C. Avoid repeated freeze-thaw cycles.
Protein Name	CD160 antigen
Gene Name	CD160
Cellular localization	[CD160 antigen]: Cell membrane ; Lipid-anchor, GPI-anchor .; [CD160 antigen, soluble form]: Secreted. Released from the cell membrane by GPI cleavage. .
Purification	The antibody was affinity-purified from rabbit antiserum by affinity-chromatography using epitope-specific immunogen.
Clonality	Polyclonal
Concentration	1 mg/ml
Observed band	17kD
Human Gene ID	11126
Human Swiss-Prot Number	O95971
Alternative Names	CD160; BY55; CD160 antigen; Natural killer cell receptor BY55; CD antigen CD160
Background	CD160 is an 27 kDa glycoprotein which was initially identified with the monoclonal antibody BY55. Its expression is tightly associated with peripheral

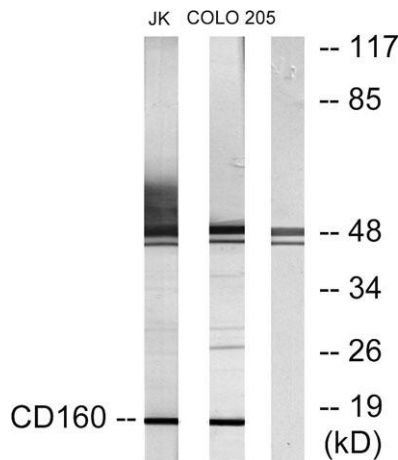




blood NK cells and CD8 T lymphocytes with cytolytic effector activity. The cDNA sequence of CD160 predicts a cysteine-rich, glycosylphosphatidylinositol-anchored protein of 181 amino acids with a single Ig-like domain weakly homologous to KIR2DL4 molecule. CD160 is expressed at the cell surface as a tightly disulfide-linked multimer. RNA blot analysis revealed CD160 mRNAs of 1.5 and 1.6 kb whose expression was highly restricted to circulating NK and T cells, spleen and small intestine. Within NK cells CD160 is expressed by CD56dimCD16+ cells whereas among circulating T cells its expression is mainly restricted to TCRgd bearing cells and to TCRab+CD8brightCD95+CD56+CD28-CD27-cells. In tissues, CD160 is expressed on all intestinal intraepithelial lymphocytes. C



Western Blot analysis of various cells using CD160 Polyclonal Antibody



Western blot analysis of lysates from Jurkat and COLO205 cells, using CD160 Antibody. The lane on the right is blocked with the synthesized peptide.

