



# CCRL1 rabbit pAb

Cat No.:ES1890

For research use only

## Overview

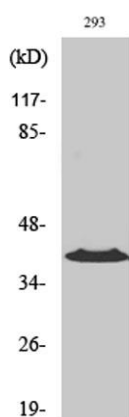
Product Name	CCRL1 rabbit pAb
Host species	Rabbit
Applications	WB;IF;ELISA
Species Cross-Reactivity	Human;Mouse
Recommended dilutions	Western Blot: 1/500 - 1/2000. Immunofluorescence: 1/200 - 1/1000. ELISA: 1/5000. Not yet tested in other applications.
Immunogen	The antiserum was produced against synthesized peptide derived from human CCRL1. AA range:5-54
Specificity	CCRL1 Polyclonal Antibody detects endogenous levels of CCRL1 protein.
Formulation	Liquid in PBS containing 50% glycerol, 0.5% BSA and 0.02% sodium azide.
Storage	Store at -20°C. Avoid repeated freeze-thaw cycles.
Protein Name	C-C chemokine receptor type 11
Gene Name	CCRL1
Cellular localization	Early endosome . Recycling endosome . Cell membrane ; Multi-pass membrane protein . Predominantly localizes to endocytic vesicles, and upon stimulation by the ligand is internalized via caveolae. Once internalized, the ligand dissociates from the receptor, and is targeted to degradation while the receptor is recycled back to the cell membrane.
Purification	The antibody was affinity-purified from rabbit antiserum by affinity-chromatography using epitope-specific immunogen.
Clonality	Polyclonal
Concentration	1 mg/ml
Observed band	40kD
Human Gene ID	51554
Human Swiss-Prot Number	Q9NPB9
Alternative Names	CCRL1; CCBP2; CCR11; VSHK1; C-C chemokine





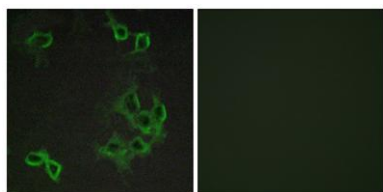
## Background

receptor type 11; C-C CKR-11; CC-CKR-11; CCR-11; CC chemokine receptor-like 1; CCRL1; CCX CKR  
The protein encoded by this gene is a member of the G protein-coupled receptor family, and is a receptor for C-C type chemokines. This receptor has been shown to bind dendritic cell- and T cell-activated chemokines including CCL19/ELC, CCL21/SLC, and CCL25/TECK. A pseudogene of this gene is found on chromosome 6. Alternatively spliced transcript variants encoding the same protein have been described. [provided by RefSeq, Jul 2013],



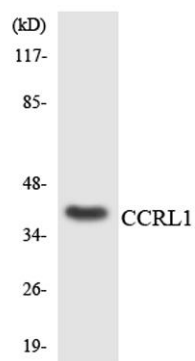
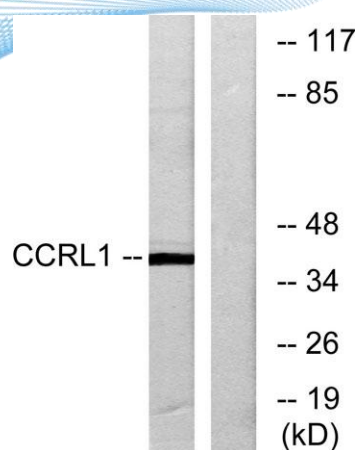
Western Blot analysis of various cells using CCRL1  
Polyclonal Antibody diluted at 1:1000

Immunofluorescence analysis of COS7 cells, using CCRL1  
Antibody. The picture on the right is blocked with the  
synthesized peptide.





**ELK Biotechnology**



+86-27-59760950

[ELKbio@ELKbiotech.com](mailto:ELKbio@ELKbiotech.com)

[www.elkbiotech.com](http://www.elkbiotech.com)

23-2, No.388 Gaoxin 2nd Road, Wuhan East Lake Hi-tech Development Zone, Hubei, P.R.C.