



# CBP20 rabbit pAb

Cat No.:ES1882

For research use only

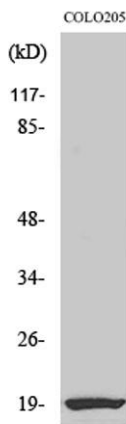
## Overview

<b>Product Name</b>	CBP20 rabbit pAb
<b>Host species</b>	Rabbit
<b>Applications</b>	WB;IHC;IF;ELISA
<b>Species Cross-Reactivity</b>	Human;Mouse
<b>Recommended dilutions</b>	Western Blot: 1/500 - 1/2000. Immunohistochemistry: 1/100 - 1/300. Immunofluorescence: 1/200 - 1/1000. ELISA: 1/5000. Not yet tested in other applications.
<b>Immunogen</b>	The antiserum was produced against synthesized peptide derived from human NCBP2. AA range:10-59
<b>Specificity</b>	CBP20 Polyclonal Antibody detects endogenous levels of CBP20 protein.
<b>Formulation</b>	Liquid in PBS containing 50% glycerol, 0.5% BSA and 0.02% sodium azide.
<b>Storage</b>	Store at -20°C. Avoid repeated freeze-thaw cycles.
<b>Protein Name</b>	Nuclear cap-binding protein subunit 2
<b>Gene Name</b>	NCBP2
<b>Cellular localization</b>	Nucleus . Cytoplasm .
<b>Purification</b>	The antibody was affinity-purified from rabbit antiserum by affinity-chromatography using epitope-specific immunogen.
<b>Clonality</b>	Polyclonal
<b>Concentration</b>	1 mg/ml
<b>Observed band</b>	18kD
<b>Human Gene ID</b>	22916
<b>Human Swiss-Prot Number</b>	P52298
<b>Alternative Names</b>	NCBP2; CBP20; PIG55; Nuclear cap-binding protein subunit 2; 20 kDa nuclear cap-binding protein; Cell proliferation-inducing gene 55 protein; NCBP 20 kDa subunit; CBP20; NCBP-interacting protein 1; NIP1
<b>Background</b>	The product of this gene is a component of the nuclear cap-binding protein complex (CBC), which

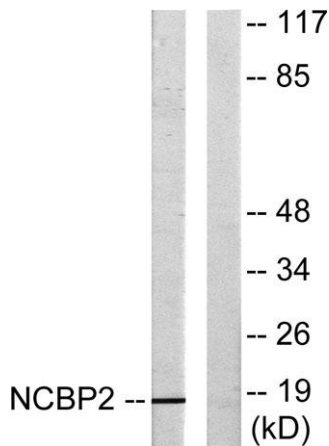




binds to the monomethylated 5' cap of nascent pre-mRNA in the nucleoplasm. The encoded protein has an RNP domain commonly found in RNA binding proteins, and contains the cap-binding activity. The CBC promotes pre-mRNA splicing, 3'-end processing, RNA nuclear export, and nonsense-mediated mRNA decay. Multiple transcript variants encoding different isoforms have been found for this gene. [provided by RefSeq, Jul 2008],



Western Blot analysis of various cells using CBP20 Polyclonal Antibody



Western blot analysis of lysates from COLO205 cells, using NCBP2 Antibody. The lane on the right is blocked with the synthesized peptide.



Immunohistochemical analysis of paraffin-embedded human tonsil. 1, Tris-EDTA, pH 9.0 was used for antigen retrieval. 2 Antibody was diluted at 1:200 (4° overnight). 3, Secondary antibody was diluted at 1:200 (room temperature, 45 min).





**ELK Biotechnology**



+86-27-59760950

[ELKbio@ELKbiotech.com](mailto:ELKbio@ELKbiotech.com)

[www.elkbiotech.com](http://www.elkbiotech.com)

23-2, No.388 Gaoxin 2nd Road,Wuhan East Lake Hi-tech Development Zone, Hubei , P.R.C