

AMELY rabbit pAb

Cat No.:ES18377

For research use only

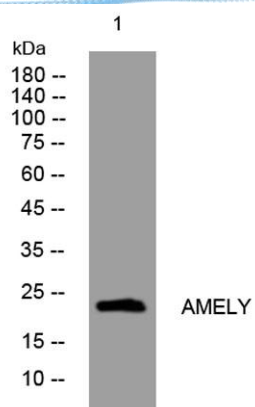
Overview

Product Name	AMELY rabbit pAb
Host species	Rabbit
Applications	WB
Species Cross-Reactivity	Human
Recommended dilutions	WB 1: 500-2000
Immunogen	Synthesized peptide derived from human AMELY.AA range 17-57
Specificity	This antibody detects endogenous levels of AMELY at Human
Formulation	Liquid in PBS containing 50% glycerol, 0.5% BSA and 0.02% sodium azide.
Storage	Store at -20°C. Avoid repeated freeze-thaw cycles.
Protein Name	AMELY
Gene Name	AMELY AMGL AMGY
Cellular localization	Secreted, extracellular space, extracellular matrix.
Purification	The antibody was affinity-purified from rabbit antiserum by affinity-chromatography using epitope-specific immunogen.
Clonality	Polyclonal
Concentration	1 mg/ml
Observed band	
Human Gene ID	266
Human Swiss-Prot Number	Q99218
Alternative Names	
Background	This gene encodes a member of the amelogenin family of extracellular matrix proteins. Amelogenins are involved in biomineralization during tooth enamel development. Mutations in a related gene on chromosome X cause X-linked amelogenesis imperfecta. [provided by RefSeq, Jul 2008],





ELK Biotechnology



Western blot analysis of lysates from HuvEc cells, primary antibody was diluted at 1:1000, 4° over night



+86-27-59760950

ELKbio@ELKbiotech.com

www.elkbiotech.com

23-2, No.388 Gaoxin 2nd Road, Wuhan East Lake Hi-tech Development Zone, Hubei, P.R.C.