



CaMKV rabbit pAb

Cat No.:ES1836

For research use only

Overview

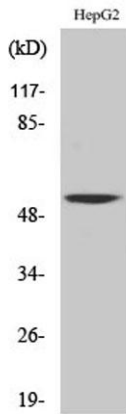
Product Name	CaMKV rabbit pAb
Host species	Rabbit
Applications	WB;IHC;IF;ELISA
Species Cross-Reactivity	Human;Mouse;Rat
Recommended dilutions	Western Blot: 1/500 - 1/2000. Immunohistochemistry: 1/100 - 1/300. Immunofluorescence: 1/200 - 1/1000. ELISA: 1/10000. Not yet tested in other applications.
Immunogen	The antiserum was produced against synthesized peptide derived from human CAMK5. AA range:211-260
Specificity	CaMKV Polyclonal Antibody detects endogenous levels of CaMKV protein.
Formulation	Liquid in PBS containing 50% glycerol, 0.5% BSA and 0.02% sodium azide.
Storage	Store at -20°C. Avoid repeated freeze-thaw cycles.
Protein Name	CaM kinase-like vesicle-associated protein
Gene Name	CAMKV
Cellular localization	Cell membrane ; Peripheral membrane protein . Cytoplasmic vesicle membrane ; Peripheral membrane protein . Predominantly observed in association with the plasma membrane of soma and in neurites, both axons and dendrites. May be associated with vesicular structures (By similarity) .
Purification	The antibody was affinity-purified from rabbit antiserum by affinity-chromatography using epitope-specific immunogen.
Clonality	Polyclonal
Concentration	1 mg/ml
Observed band	54kD
Human Gene ID	79012
Human Swiss-Prot Number	Q8NCB2
Alternative Names	CAMKV; CaM kinase-like vesicle-associated protein





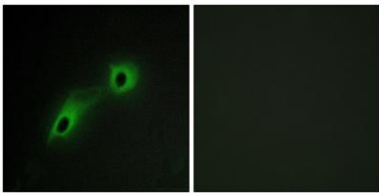
Background

cofactor:Calcium.,domain:The protein kinase domain is predicted to be catalytically inactive.,function:Does not appear to have detectable kinase activity.,similarity:Belongs to the protein kinase superfamily. CAMK Ser/Thr protein kinase family.,similarity:Contains 1 protein kinase domain.,subcellular location:Predominantly observed in association with the plasma membrane of soma and in neurites, both axons and dendrites. May be associated with vesicular structures.,subunit:Interacts with calmodulin, in the presence of calcium.,



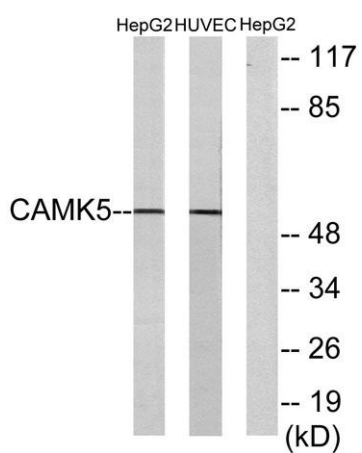
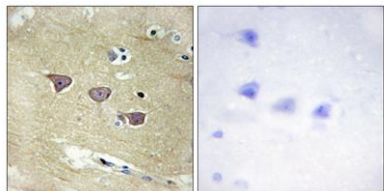
Western Blot analysis of various cells using CaMKV Polyclonal Antibody

Immunofluorescence analysis of HeLa cells, using CAMK5 Antibody. The picture on the right is blocked with the synthesized peptide.





Immunohistochemistry analysis of paraffin-embedded human brain tissue, using CAMK5 Antibody. The picture on the right is blocked with the synthesized peptide.



Western blot analysis of lysates from HepG2 and HUVEC cells, using CAMK5 Antibody. The lane on the right is blocked with the synthesized peptide.

