



# AP2M1 (phospho-Thr156) rabbit pAb

Cat No.:ES18308

For research use only

## Overview

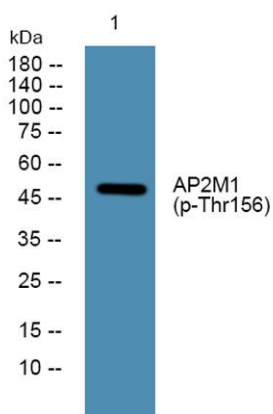
<b>Product Name</b>	AP2M1 (phospho-Thr156) rabbit pAb
<b>Host species</b>	Rabbit
<b>Applications</b>	WB
<b>Species Cross-Reactivity</b>	Human;Rat;Mouse;
<b>Recommended dilutions</b>	WB 1:1000-2000
<b>Immunogen</b>	Synthesized phospho peptide around human AP2M1 (Thr156)
<b>Specificity</b>	This antibody detects endogenous levels of Human AP2M1 (phospho-Thr156)
<b>Formulation</b>	Liquid in PBS containing 50% glycerol, 0.5% BSA and 0.02% sodium azide.
<b>Storage</b>	Store at -20°C. Avoid repeated freeze-thaw cycles.
<b>Protein Name</b>	AP2M1 (Thr156)
<b>Gene Name</b>	AP2M1 CLAPM1 KIAA0109
<b>Cellular localization</b>	Cell membrane . Membrane, coated pit ; Peripheral membrane protein; Cytoplasmic side. AP-2 appears to be excluded from internalizing CCVs and to disengage from sites of endocytosis seconds before internalization of the nascent CCV. .
<b>Purification</b>	The antibody was affinity-purified from rabbit antiserum by affinity-chromatography using epitope-specific immunogen.
<b>Clonality</b>	Polyclonal
<b>Concentration</b>	1 mg/ml
<b>Observed band</b>	47kD
<b>Human Gene ID</b>	1173
<b>Human Swiss-Prot Number</b>	Q96CW1
<b>Alternative Names</b>	AP-2 complex subunit mu (AP-2 mu chain) (Adapter-related protein complex 2 mu subunit) (Adaptin-mu2) (Adaptor protein complex AP-2 subunit mu) (Clathrin assembly protein complex 2 medium chain) (Clathrin coat assembly protein AP50) (Clathrin coat-associat





## Background

This gene encodes a subunit of the heterotetrameric coat assembly protein complex 2 (AP2), which belongs to the adaptor complexes medium subunits family. The encoded protein is required for the activity of a vacuolar ATPase, which is responsible for proton pumping occurring in the acidification of endosomes and lysosomes. The encoded protein may also play an important role in regulating the intracellular trafficking and function of CTLA-4 protein. Three transcript variants encoding different isoforms have been found for this gene. [provided by RefSeq, Jul 2015],



Western blot analysis of lysates from K562 cells, primary antibody was diluted at 1:1000, 4° over night

