



ATF6A rabbit pAb

Cat No.:ES18210

For research use only

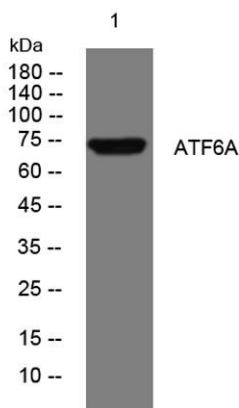
Overview

Product Name	ATF6A rabbit pAb
Host species	Rabbit
Applications	WB
Species Cross-Reactivity	Human;Rat;Mouse;
Recommended dilutions	WB 1: 500-2000
Immunogen	Synthesized peptide derived from human ATF6A AA range: 221-271
Specificity	This antibody detects endogenous levels of ATF6A at Human
Formulation	Liquid in PBS containing 50% glycerol, 0.5% BSA and 0.02% sodium azide.
Storage	Store at -20°C. Avoid repeated freeze-thaw cycles.
Protein Name	ATF6A
Gene Name	ATF6
Cellular localization	Endoplasmic reticulum membrane ; Single-pass type II membrane protein . Golgi apparatus membrane ; Single-pass type II membrane protein . Translocates from the endoplasmic reticulum to the Golgi, where it is processed. .; [Processed cyclic AMP-dependent t
Purification	The antibody was affinity-purified from rabbit antiserum by affinity-chromatography using epitope-specific immunogen.
Clonality	Polyclonal
Concentration	1 mg/ml
Observed band	90kD
Human Gene ID	22926
Human Swiss-Prot Number	P18850
Alternative Names	
Background	This gene encodes a transcription factor that activates target genes for the unfolded protein response (UPR) during endoplasmic reticulum (ER) stress. Although it is a transcription factor, this protein is unusual in that it is synthesized as a





transmembrane protein that is embedded in the ER. It functions as an ER stress sensor/transducer, and following ER stress-induced proteolysis, it functions as a nuclear transcription factor via a cis-acting ER stress response element (ERSE) that is present in the promoters of genes encoding ER chaperones. This protein has been identified as a survival factor for quiescent but not proliferative squamous carcinoma cells. There have been conflicting reports about the association of polymorphisms in this gene with diabetes in different populations, but another polymorphism has been associated with increased plasma cholesterol levels. This gene is also thought to be a potential therapeutic target for cystic fibrosis. [provided by RefSeq, Aug 2011],



Western blot analysis of lysates from HeLa cells, primary antibody was diluted at 1:1000, 4° over night

