

ATP5J rabbit pAb

Cat No.:ES18193

For research use only

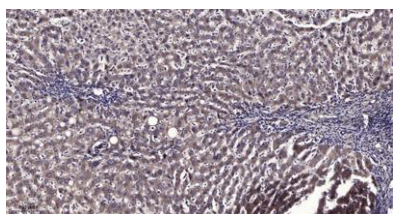
Overview

Product Name	ATP5J rabbit pAb
Host species	Rabbit
Applications	IHC;IF
Species Cross-Reactivity	Human; Mouse;Rat
Recommended dilutions	IHC-p 1: 50-200
Immunogen	Synthesized peptide derived from human ATP5J AA range: 13-63
Specificity	This antibody detects endogenous levels of ATP5J at Human/Mouse/Rat
Formulation	Liquid in PBS containing 50% glycerol, 0.5% BSA and 0.02% sodium azide.
Storage	Store at -20°C. Avoid repeated freeze-thaw cycles.
Protein Name	ATP5J
Gene Name	ATP5J ATP5A ATPM
Cellular localization	Mitochondrion. Mitochondrion inner membrane.
Purification	The antibody was affinity-purified from rabbit antiserum by affinity-chromatography using epitope-specific immunogen.
Clonality	Polyclonal
Concentration	1 mg/ml
Observed band	
Human Gene ID	522
Human Swiss-Prot Number	P18859
Alternative Names	
Background	Mitochondrial ATP synthase catalyzes ATP synthesis, utilizing an electrochemical gradient of protons across the inner membrane during oxidative phosphorylation. It is composed of two linked multi-subunit complexes: the soluble catalytic core, F1, and the membrane-spanning component, Fo, which comprises the proton channel. The F1 complex consists of 5 different subunits (alpha, beta, gamma, delta, and epsilon) assembled in a ratio of 3





alpha, 3 beta, and a single representative of the other 3. The Fo complex has nine subunits (a, b, c, d, e, f, g, F6 and 8). This gene encodes the F6 subunit of the Fo complex. The F6 subunit is required for F1 and Fo interactions. Alternatively spliced transcript variants encoding different isoforms have been identified for this gene. This gene has 1 or more pseudogenes. [provided by RefSeq, Feb 2016],



Immunohistochemical analysis of paraffin-embedded human liver cancer. 1, Antibody was diluted at 1:200(4° overnight). 2, Tris-EDTA,pH9.0 was used for antigen retrieval. 3,Secondary antibody was diluted at 1:200(room temperature, 45min).

