

ATS15 rabbit pAb

Cat No.:ES18188

For research use only

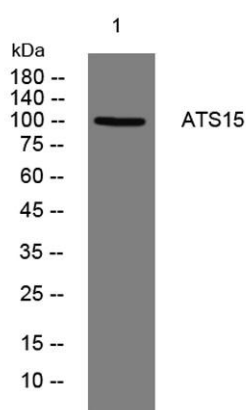
Overview

Product Name	ATS15 rabbit pAb
Host species	Rabbit
Applications	WB
Species Cross-Reactivity	Human; Mouse
Recommended dilutions	WB 1:500-2000
Immunogen	Synthesized peptide derived from human ATS15 AA range: 165-215
Specificity	This antibody detects endogenous levels of ATS15 at Human/Mouse
Formulation	Liquid in PBS containing 50% glycerol, 0.5% BSA and 0.02% sodium azide.
Storage	Store at -20°C. Avoid repeated freeze-thaw cycles.
Protein Name	ATS15
Gene Name	ADAMTS15
Cellular localization	Secreted, extracellular space, extracellular matrix . Cell surface .
Purification	The antibody was affinity-purified from rabbit antiserum by affinity-chromatography using epitope-specific immunogen.
Clonality	Polyclonal
Concentration	1 mg/ml
Observed band	105kD
Human Gene ID	170689
Human Swiss-Prot Number	Q8TE58
Alternative Names	A disintegrin and metalloproteinase with thrombospondin motifs 15 (ADAM-TS 15) (ADAM-TS15) (ADAMTS-15) (EC 3.4.24.-)
Background	This gene encodes a member of the ADAMTS (a disintegrin and metalloproteinase with thrombospondin motifs) protein family. ADAMTS family members share several distinct protein modules, including a propeptide region, a metalloproteinase domain, a disintegrin-like





domain, and a thrombospondin type 1 (TS) motif. Individual members of this family differ in the number of C-terminal TS motifs, and some have unique C-terminal domains. The encoded preproprotein is proteolytically processed to generate the mature enzyme, which may play a role in versican processing during skeletal muscle development. This gene may function as a tumor suppressor in colorectal and breast cancers. [provided by RefSeq, May 2016],



Western blot analysis of lysates from Jarkat cells, primary antibody was diluted at 1:1000, 4° over night

