

# ATX3L rabbit pAb

Cat No.:ES18185

For research use only

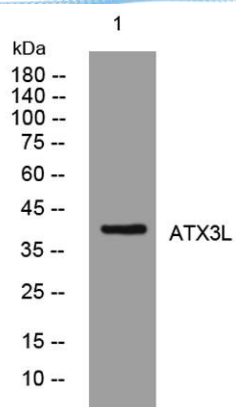
## Overview

Product Name	ATX3L rabbit pAb
Host species	Rabbit
Applications	WB
Species Cross-Reactivity	Human;Rat;Mouse;
Recommended dilutions	WB 1:500-2000
Immunogen	Synthesized peptide derived from human ATX3L AA range: 99-149
Specificity	This antibody detects endogenous levels of ATX3L at Human
Formulation	Liquid in PBS containing 50% glycerol, 0.5% BSA and 0.02% sodium azide.
Storage	Store at -20°C. Avoid repeated freeze-thaw cycles.
Protein Name	ATX3L
Gene Name	ATXN3L ATX3L MJDL
Cellular localization	Nucleus .
Purification	The antibody was affinity-purified from rabbit antiserum by affinity-chromatography using epitope-specific immunogen.
Clonality	Polyclonal
Concentration	1 mg/ml
Observed band	38kD
Human Gene ID	92552
Human Swiss-Prot Number	Q9H3M9
Alternative Names	Putative ataxin-3-like protein (EC 3.4.19.12) (Machado-Joseph disease protein 1-like)
Background	This intronless gene may be a pseudogene (PMID:11450850). This gene is similar to the multi-exon gene which encodes ataxin 3 and contains a coding region which could encode a protein similar to ataxin 3. Mutations in the gene encoding ataxin 3 are associated with Machado-Joseph disease. [provided by RefSeq, Sep 2011],





**ELK Biotechnology**



Western blot analysis of lysates from SW480 cells, primary antibody was diluted at 1:1000, 4° over night



+86-27-59760950

ELKbio@ELKbiotech.com

[www.elkbiotech.com](http://www.elkbiotech.com)

23-2, No.388 Gaoxin 2nd Road, Wuhan East Lake Hi-tech Development Zone, Hubei, P.R.C.