



# Bamacan (Phospho-Ser1083) rabbit pAb

Cat No.:ES18099

For research use only

## Overview

Product Name	Bamacan (Phospho-Ser1083) rabbit pAb
Host species	Rabbit
Applications	IHC;IF;WB
Species Cross-Reactivity	Human; Mouse; Rat
Recommended dilutions	IHC-p 1:50-200, WB 1:500-2000
Immunogen	Synthesized peptide derived from human Bamacan (Phospho-Ser1083)
Specificity	This antibody detects endogenous phospho levels of Bamacan (Phospho-Ser1083) at Human:S1083, Mouse:S1083, Rat:S1083
Formulation	Liquid in PBS containing 50% glycerol, 0.5% BSA and 0.02% sodium azide.
Storage	Store at -20°C. Avoid repeated freeze-thaw cycles.
Protein Name	Bamacan (Phospho-Ser1083)
Gene Name	SMC3 BAM BMH CSPG6 SMC3L1
Cellular localization	Nucleus . Chromosome . Chromosome, centromere . Associates with chromatin. Before prophase it is scattered along chromosome arms. During prophase, most of cohesin complexes dissociate from chromatin probably because of phosphorylation by PLK, except at ce
Purification	The antibody was affinity-purified from rabbit antiserum by affinity-chromatography using epitope-specific immunogen.
Clonality	Polyclonal
Concentration	1 mg/ml
Observed band	145kD
Human Gene ID	9126
Human Swiss-Prot Number	Q9UQE7
Alternative Names	Structural maintenance of chromosomes protein 3 (SMC protein 3;SMC-3;Basement membrane-associated chondroitin proteoglycan;Bamacan;Chondroitin sulfate

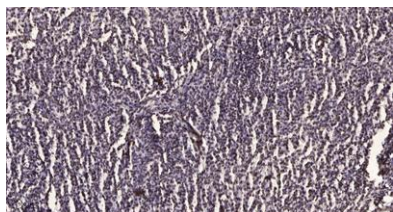




## Background

proteoglycan 6;Chromosome-associated polypeptide;hCAP)

This gene belongs to the SMC3 subfamily of SMC proteins. The encoded protein occurs in certain cell types as either an intracellular, nuclear protein or a secreted protein. The nuclear form, known as structural maintenance of chromosomes 3, is a component of the multimeric cohesin complex that holds together sister chromatids during mitosis, enabling proper chromosome segregation. Post-translational modification of the encoded protein by the addition of chondroitin sulfate chains gives rise to the secreted proteoglycan bamacan, an abundant basement membrane protein. [provided by RefSeq, Jul 2008],



Immunohistochemical analysis of paraffin-embedded human brain tumor. 1, Antibody was diluted at 1:200(4° overnight). 2, Tris-EDTA,pH9.0 was used for antigen retrieval. 3,Secondary antibody was diluted at 1:200(room temperature, 45min).

