

BHE22 rabbit pAb

Cat No.:ES18058

For research use only

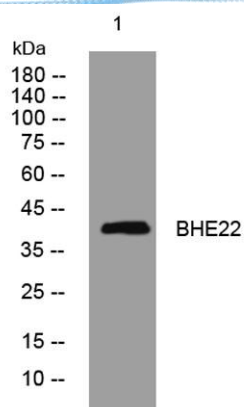
Overview

Product Name	BHE22 rabbit pAb
Host species	Rabbit
Applications	WB
Species Cross-Reactivity	Human; Mouse
Recommended dilutions	WB 1: 500-2000
Immunogen	Synthesized peptide derived from human BHE22 AA range: 243-293
Specificity	This antibody detects endogenous levels of BHE22 at Human/Mouse
Formulation	Liquid in PBS containing 50% glycerol, 0.5% BSA and 0.02% sodium azide.
Storage	Store at -20°C. Avoid repeated freeze-thaw cycles.
Protein Name	BHE22
Gene Name	BHLHE22 BHLHB5 TNRC20
Cellular localization	Nucleus .
Purification	The antibody was affinity-purified from rabbit antiserum by affinity-chromatography using epitope-specific immunogen.
Clonality	Polyclonal
Concentration	1 mg/ml
Observed band	
Human Gene ID	27319
Human Swiss-Prot Number	Q8NFJ8
Alternative Names	
Background	This gene encodes a protein that belongs to the basic helix-loop-helix (bHLH) family of transcription factors that regulate cell fate determination, proliferation, and differentiation. A similar protein in mouse is required for the development of the dorsal cochlear nuclei, and is thought to play a role in the differentiation of neurons involved in sensory input. The mouse protein also functions in retinogenesis. [provided by RefSeq, Oct 2016],





ELK Biotechnology



Western blot analysis of lysates from HeLa cells, primary antibody was diluted at 1:1000, 4° over night



+86-27-59760950

ELKbio@ELKbiotech.com

www.elkbiotech.com

23-2, No.388 Gaoxin 2nd Road, Wuhan East Lake Hi-tech Development Zone, Hubei, P.R.C.