

Bim (phospho-Ser69) rabbit pAb

Cat No.:ES18054

For research use only

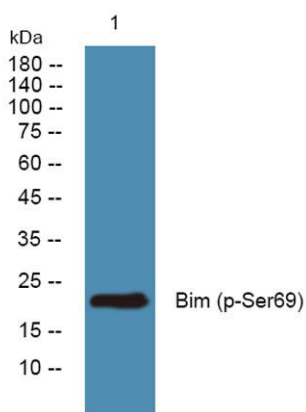
Overview

Product Name	Bim (phospho-Ser69) rabbit pAb
Host species	Rabbit
Applications	WB
Species Cross-Reactivity	Human;Mouse
Recommended dilutions	WB 1:1000-2000
Immunogen	Synthesized phospho peptide around human Bim (Ser69)
Specificity	This antibody detects endogenous levels of Human Mouse Bim (phospho-Ser69)
Formulation	Liquid in PBS containing 50% glycerol, 0.5% BSA and 0.02% sodium azide.
Storage	Store at -20°C. Avoid repeated freeze-thaw cycles.
Protein Name	Bim (Ser69)
Gene Name	BCL2L11 BIM
Cellular localization	Endomembrane system ; Peripheral membrane protein . Associated with intracytoplasmic membranes. ; [Isoform BimEL]: Mitochondrion. Translocates from microtubules to mitochondria on loss of cell adherence.; [Isoform BimL]: Mitochondrion.; [Isoform BimS]: M
Purification	The antibody was affinity-purified from rabbit antiserum by affinity-chromatography using epitope-specific immunogen.
Clonality	Polyclonal
Concentration	1 mg/ml
Observed band	22kD
Human Gene ID	10018
Human Swiss-Prot Number	O43521
Alternative Names	Bcl-2-like protein 11 (Bcl2-L-11) (Bcl2-interacting mediator of cell death)
Background	The protein encoded by this gene belongs to the BCL-2 protein family. BCL-2 family members form hetero- or homodimers and act as anti- or





pro-apoptotic regulators that are involved in a wide variety of cellular activities. The protein encoded by this gene contains a Bcl-2 homology domain 3 (BH3). It has been shown to interact with other members of the BCL-2 protein family and to act as an apoptotic activator. The expression of this gene can be induced by nerve growth factor (NGF), as well as by the forkhead transcription factor FKHR-L1, which suggests a role of this gene in neuronal and lymphocyte apoptosis. Transgenic studies of the mouse counterpart suggested that this gene functions as an essential initiator of apoptosis in thymocyte-negative selection. Several alternatively spliced transcript variants of this gene have been identified. [provided by RefSeq, Jun 2013],



Western blot analysis of lysates from U2OS cells, primary antibody was diluted at 1:1000, 4°over night

