



BRCAA1 rabbit pAb

Cat No.:ES1789

For research use only

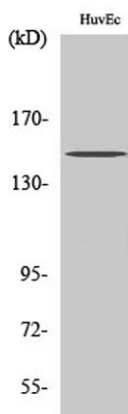
Overview

Product Name	BRCAA1 rabbit pAb
Host species	Rabbit
Applications	WB;ELISA
Species Cross-Reactivity	Human;Mouse;Rat
Recommended dilutions	Western Blot: 1/500 - 1/2000. ELISA: 1/10000. Not yet tested in other applications.
Immunogen	The antiserum was produced against synthesized peptide derived from human BRCAA1. AA range:761-810
Specificity	BRCAA1 Polyclonal Antibody detects endogenous levels of BRCAA1 protein.
Formulation	Liquid in PBS containing 50% glycerol, 0.5% BSA and 0.02% sodium azide.
Storage	Store at -20°C. Avoid repeated freeze-thaw cycles.
Protein Name	AT-rich interactive domain-containing protein 4B
Gene Name	ARID4B
Cellular localization	Nucleus . Cytoplasm . Cytoplasmic in breast cancer cells. .
Purification	The antibody was affinity-purified from rabbit antiserum by affinity-chromatography using epitope-specific immunogen.
Clonality	Polyclonal
Concentration	1 mg/ml
Observed band	148kD
Human Gene ID	51742
Human Swiss-Prot Number	Q4LE39
Alternative Names	ARID4B; BRCAA1; RBBP1L1; RBP1L1; SAP180; AT-rich interactive domain-containing protein 4B; ARID domain-containing protein 4B; 180 kDa Sin3-associated polypeptide; Sin3-associated polypeptide p180; Breast cancer-associated antigen BRCAA1; Hi
Background	This gene encodes a protein with sequence

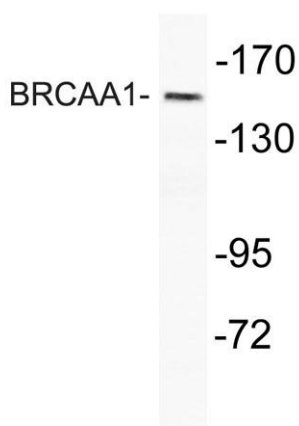




similarity to retinoblastoma-binding protein-1. The encoded protein is a subunit of the histone deacetylase-dependant SIN3A transcriptional corepressor complex, which functions in diverse cellular processes including proliferation, differentiation, apoptosis, oncogenesis, and cell fate determination. The gene product is recognized by IgG antibody isolated from a breast cancer patient and appears to be a molecular marker associated with a broad range of human malignancies. Alternate transcriptional splice variants encoding different isoforms have been characterized. [provided by RefSeq, Jul 2008],



Western Blot analysis of various cells using BRCAA1 Polyclonal Antibody



Western blot analysis of lysate from HUVEC cells, using BRCAA1 antibody.

