



CASQ1 rabbit pAb

Cat No.:ES17843

For research use only

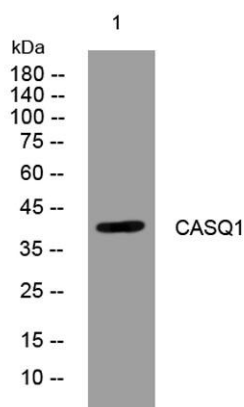
Overview

Product Name	CASQ1 rabbit pAb
Host species	Rabbit
Applications	WB
Species Cross-Reactivity	Human; Mouse;Rat
Recommended dilutions	WB 1: 500-2000
Immunogen	Synthesized peptide derived from human CASQ1 AA range: 322-372
Specificity	This antibody detects endogenous levels of CASQ1 at Human/Mouse/Rat
Formulation	Liquid in PBS containing 50% glycerol, 0.5% BSA and 0.02% sodium azide.
Storage	Store at -20°C. Avoid repeated freeze-thaw cycles.
Protein Name	CASQ1
Gene Name	CASQ1 CASQ
Cellular localization	Endoplasmic reticulum . Sarcoplasmic reticulum . Sarcoplasmic reticulum lumen . Sarcoplasmic reticulum membrane; Peripheral membrane protein; Luminal side . Mitochondrion matrix . This isoform of calsequestrin occurs in the sarcoplasmic reticulum's termin
Purification	The antibody was affinity-purified from rabbit antiserum by affinity-chromatography using epitope-specific immunogen.
Clonality	Polyclonal
Concentration	1 mg/ml
Observed band	
Human Gene ID	844
Human Swiss-Prot Number	P31415
Alternative Names	
Background	This gene encodes the skeletal muscle specific member of the calsequestrin protein family. Calsequestrin functions as a luminal sarcoplasmic reticulum calcium sensor in both cardiac and





skeletal muscle cells. This protein, also known as calmitine, functions as a calcium regulator in the mitochondria of skeletal muscle. This protein is absent in patients with Duchenne and Becker types of muscular dystrophy. [provided by RefSeq, Jun 2013],



Western blot analysis of lysates from THP-1 cells, primary antibody was diluted at 1:1000, 4° over night

