



CBX4 rabbit pAb

Cat No.:ES17817

For research use only

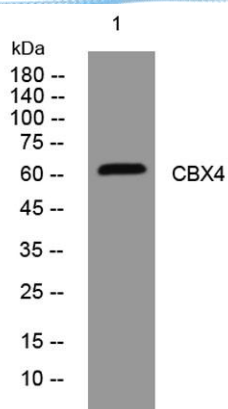
Overview

Product Name	CBX4 rabbit pAb
Host species	Rabbit
Applications	WB
Species Cross-Reactivity	Human; Mouse
Recommended dilutions	WB 1: 500-2000
Immunogen	Synthesized peptide derived from human CBX4 AA range: 196-246
Specificity	This antibody detects endogenous levels of CBX4 at Human/Mouse
Formulation	Liquid in PBS containing 50% glycerol, 0.5% BSA and 0.02% sodium azide.
Storage	Store at -20°C. Avoid repeated freeze-thaw cycles.
Protein Name	CBX4
Gene Name	CBX4
Cellular localization	Nucleus . Nucleus speckle . Localization to nuclear polycomb bodies is required for ZNF131 sumoylation (PubMed:22467880). Localized in distinct foci on chromatin (PubMed:18927235). .
Purification	The antibody was affinity-purified from rabbit antiserum by affinity-chromatography using epitope-specific immunogen.
Clonality	Polyclonal
Concentration	1 mg/ml
Observed band	
Human Gene ID	8535
Human Swiss-Prot Number	O00257
Alternative Names	
Background	





ELK Biotechnology



Western blot analysis of lysates from HuvEc cells, primary antibody was diluted at 1:1000, 4° over night



+86-27-59760950

ELKbio@ELKbiotech.com

www.elkbiotech.com

23-2, No.388 Gaoxin 2nd Road, Wuhan East Lake Hi-tech Development Zone, Hubei, P.R.C.