



# CCD50 rabbit pAb

Cat No.:ES17777

For research use only

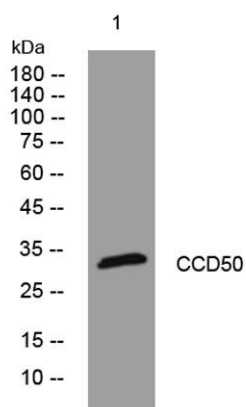
## Overview

<b>Product Name</b>	CCD50 rabbit pAb
<b>Host species</b>	Rabbit
<b>Applications</b>	WB
<b>Species Cross-Reactivity</b>	Human; Mouse;Rat
<b>Recommended dilutions</b>	WB 1: 500-2000
<b>Immunogen</b>	Synthesized peptide derived from human CCD50 AA range: 221-271
<b>Specificity</b>	This antibody detects endogenous levels of CCD50 at Human/Mouse/Rat
<b>Formulation</b>	Liquid in PBS containing 50% glycerol, 0.5% BSA and 0.02% sodium azide.
<b>Storage</b>	Store at -20°C. Avoid repeated freeze-thaw cycles.
<b>Protein Name</b>	CCD50
<b>Gene Name</b>	CCDC50 C3orf6
<b>Cellular localization</b>	Cytoplasm. Associated with microtubules of the cytoskeleton and mitotic apparatus. .
<b>Purification</b>	The antibody was affinity-purified from rabbit antiserum by affinity-chromatography using epitope-specific immunogen.
<b>Clonality</b>	Polyclonal
<b>Concentration</b>	1 mg/ml
<b>Observed band</b>	
<b>Human Gene ID</b>	152137
<b>Human Swiss-Prot Number</b>	Q8IVM0
<b>Alternative Names</b>	
<b>Background</b>	This gene encodes a soluble, cytoplasmic, tyrosine-phosphorylated protein with multiple ubiquitin-interacting domains. Mutations in this gene cause nonsyndromic, postlingual, progressive sensorineural DFNA44 hearing loss. In mouse, the protein is expressed in the inner ear during development and postnatal maturation and associates with microtubule-based structures. This





protein may also function as a negative regulator of NF- $\kappa$ B signaling and as an effector of epidermal growth factor (EGF)-mediated cell signaling. Alternative splicing results in multiple transcript variants encoding distinct isoforms. [provided by RefSeq, Oct 2008],



Western blot analysis of lysates from MCF-7 cells, primary antibody was diluted at 1:1000, 4° over night

