



# BCKDK rabbit pAb

Cat No.:ES1756

For research use only

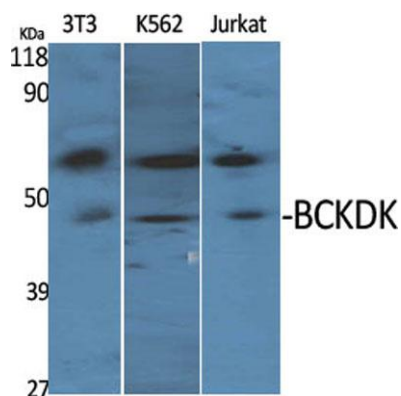
## Overview

<b>Product Name</b>	BCKDK rabbit pAb
<b>Host species</b>	Rabbit
<b>Applications</b>	WB;IHC;IF;ELISA
<b>Species Cross-Reactivity</b>	Human;Mouse;Rat
<b>Recommended dilutions</b>	Western Blot: 1/500 - 1/2000. Immunohistochemistry: 1/100 - 1/300. Immunofluorescence: 1/200 - 1/1000. ELISA: 1/20000. Not yet tested in other applications.
<b>Immunogen</b>	The antiserum was produced against synthesized peptide derived from human BCKD . AA range:11-60
<b>Specificity</b>	BCKDK Polyclonal Antibody detects endogenous levels of BCKDK protein.
<b>Formulation</b>	Liquid in PBS containing 50% glycerol, 0.5% BSA and 0.02% sodium azide.
<b>Storage</b>	Store at -20°C. Avoid repeated freeze-thaw cycles.
<b>Protein Name</b>	[3-methyl-2-oxobutanoate dehydrogenase [lipoamide]] kinase mitochondrial
<b>Gene Name</b>	BCKDK
<b>Cellular localization</b>	Mitochondrion matrix. Mitochondrion .
<b>Purification</b>	The antibody was affinity-purified from rabbit antiserum by affinity-chromatography using epitope-specific immunogen.
<b>Clonality</b>	Polyclonal
<b>Concentration</b>	1 mg/ml
<b>Observed band</b>	46kD
<b>Human Gene ID</b>	10295
<b>Human Swiss-Prot Number</b>	O14874
<b>Alternative Names</b>	BCKDK; [3-methyl-2-oxobutanoate dehydrogenase [lipoamide]] kinase; mitochondrial; Branched-chain alpha-ketoacid dehydrogenase kinase; BCKD-kinase; BCKDHKIN
<b>Background</b>	The branched-chain alpha-ketoacid dehydrogenase complex (BCKD) is an important regulator of the

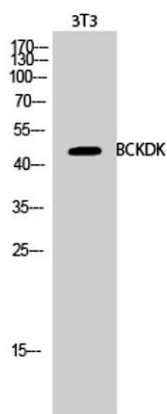




valine, leucine, and isoleucine catabolic pathways. The protein encoded by this gene is found in the mitochondrion, where it phosphorylates and inactivates BCKD. Several transcript variants encoding different isoforms have been found for this gene. [provided by RefSeq, Dec 2012],

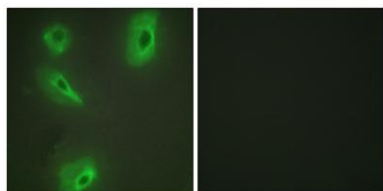


Western Blot analysis of various cells using BCKDK Polyclonal Antibody



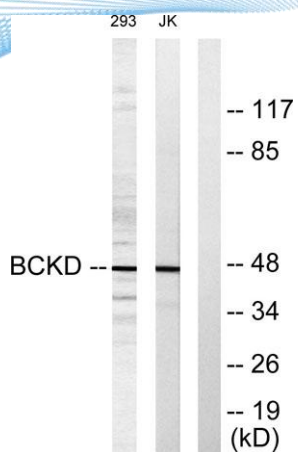
Western Blot analysis of 3T3 cells using BCKDK Polyclonal Antibody

Immunofluorescence analysis of HeLa cells, using BCKD Antibody . The picture on the right is blocked with the synthesized peptide.





**ELK Biotechnology**



Western blot analysis of lysates from Jurkat and 293 cells, using BCKD Antibody . The lane on the right is blocked with the synthesized peptide.



+86-27-59760950

[ELKbio@ELKbiotech.com](mailto:ELKbio@ELKbiotech.com)

[www.elkbiotech.com](http://www.elkbiotech.com)

23-2, No.388 Gaoxin 2nd Road,Wuhan East Lake Hi-tech Development Zone, Hubei , P.R.C