



CENPX rabbit pAb

Cat No.:ES17524

For research use only

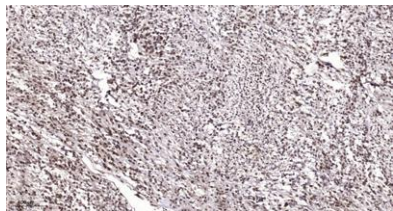
Overview

| | |
|---------------------------------|-----------------------------------------------------------------------------------------------------------------------------------------------------------------------------------------------------------------------------------------------------------------|
| Product Name | CENPX rabbit pAb |
| Host species | Rabbit |
| Applications | IHC;IF |
| Species Cross-Reactivity | Human; Mouse |
| Recommended dilutions | IHC-p 1: 50-200 |
| Immunogen | Synthesized peptide derived from human CENPX AA range: 28-78 |
| Specificity | This antibody detects endogenous levels of CENPX at Human/Mouse |
| Formulation | Liquid in PBS containing 50% glycerol, 0.5% BSA and 0.02% sodium azide. |
| Storage | Store at -20°C. Avoid repeated freeze-thaw cycles. |
| Protein Name | CENPX |
| Gene Name | STRA13 CENPX FAAP10 MHF2 |
| Cellular localization | Nucleus . Chromosome, centromere . Chromosome, centromere, kinetochore . Assembly of CENPS and CENPX and its partner subunits CENPT and CENPW at centromeres occurs through a dynamic exchange mechanism. Although exchange is continuous in the cell cycle, de |
| Purification | The antibody was affinity-purified from rabbit antiserum by affinity-chromatography using epitope-specific immunogen. |
| Clonality | Polyclonal |
| Concentration | 1 mg/ml |
| Observed band | |
| Human Gene ID | 201254 |
| Human Swiss-Prot Number | A8MT69 |
| Alternative Names | |
| Background | |





ELK Biotechnology



Immunohistochemical analysis of paraffin-embedded human Colon cancer. 1, Antibody was diluted at 1:200(4° overnight). 2, Tris-EDTA,pH9.0 was used for antigen retrieval. 3,Secondary antibody was diluted at 1:200(room temperature, 45min).



+86-27-59760950

ELKbio@ELKbiotech.com

www.elkbiotech.com

23-2, No.388 Gaoxin 2nd Road,Wuhan East Lake Hi-tech Development Zone, Hubei , P.R.C