



AZI1 rabbit pAb

Cat No.:ES1739

For research use only

Overview

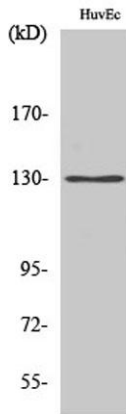
Product Name	AZI1 rabbit pAb
Host species	Rabbit
Applications	WB;IHC;IF;ELISA
Species Cross-Reactivity	Human;Rat;Mouse;
Recommended dilutions	Western Blot: 1/500 - 1/2000. Immunohistochemistry: 1/100 - 1/300. ELISA: 1/40000. Not yet tested in other applications.
Immunogen	The antiserum was produced against synthesized peptide derived from human AZI1. AA range:311-360
Specificity	AZI1 Polyclonal Antibody detects endogenous levels of AZI1 protein.
Formulation	Liquid in PBS containing 50% glycerol, 0.5% BSA and 0.02% sodium azide.
Storage	Store at -20°C. Avoid repeated freeze-thaw cycles.
Protein Name	5-azacytidine-induced protein 1
Gene Name	AZI1
Cellular localization	Cytoplasm, cytoskeleton, microtubule organizing center, centrosome . Cytoplasm, cytoskeleton, microtubule organizing center, centrosome, centriolar satellite . Cytoplasm, cytoskeleton, microtubule organizing center, centrosome, centriole . Cytoplasm, cyto
Purification	The antibody was affinity-purified from rabbit antiserum by affinity-chromatography using epitope-specific immunogen.
Clonality	Polyclonal
Concentration	1 mg/ml
Observed band	130kD
Human Gene ID	22994
Human Swiss-Prot Number	Q9UPN4
Alternative Names	AZI1; CEP131; KIAA1118; 5-azacytidine-induced protein 1; Centrosomal protein of 131 kDa; Cep131;





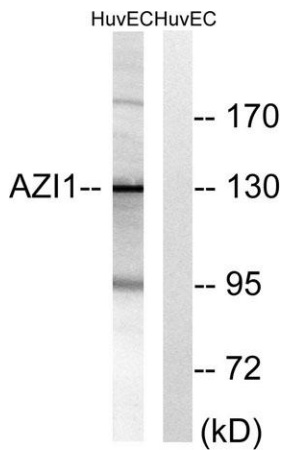
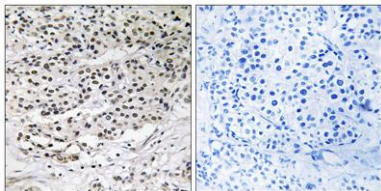
Background

Pre-acrosome localization protein 1
caution:The sequence shown here is derived from an Ensembl automatic analysis pipeline and should be considered as preliminary data.,function:May play a role in spermatogenesis.,PTM:Phosphorylated upon DNA damage, probably by ATM or ATR.,similarity:Contains 1 IQ domain.,



Western Blot analysis of various cells using AZI1 Polyclonal Antibody

Immunohistochemistry analysis of paraffin-embedded human breast carcinoma tissue, using AZI1 Antibody. The picture on the right is blocked with the synthesized peptide.



Western blot analysis of lysates from HUVEC cells, using AZI1 Antibody. The lane on the right is blocked with the synthesized peptide.

