



CLVS1 rabbit pAb

Cat No.:ES17369

For research use only

Overview

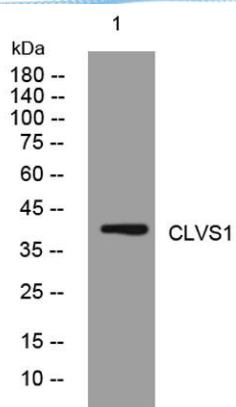
Product Name	CLVS1 rabbit pAb
Host species	Rabbit
Applications	WB
Species Cross-Reactivity	Human; Mouse;Rat
Recommended dilutions	WB 1:500-2000
Immunogen	Synthesized peptide derived from human CLVS1 AA range: 16-66
Specificity	This antibody detects endogenous levels of CLVS1 at Human/Mouse/Rat
Formulation	Liquid in PBS containing 50% glycerol, 0.5% BSA and 0.02% sodium azide.
Storage	Store at -20°C. Avoid repeated freeze-thaw cycles.
Protein Name	CLVS1
Gene Name	CLVS1 CRALBPL RLBPL1L1
Cellular localization	Golgi apparatus, trans-Golgi network membrane ; Peripheral membrane protein . Cytoplasmic vesicle, clathrin-coated vesicle . Early endosome membrane ; Peripheral membrane protein .
Purification	The antibody was affinity-purified from rabbit antiserum by affinity-chromatography using epitope-specific immunogen.
Clonality	Polyclonal
Concentration	1 mg/ml
Observed band	38kD
Human Gene ID	157807
Human Swiss-Prot Number	Q8IUQ0
Alternative Names	Clavesin-1 (Cellular retinaldehyde-binding protein-like) (Retinaldehyde-binding protein 1-like 1)

Background





ELK Biotechnology



Western blot analysis of lysates from SH-SY5Y cells,
primary antibody was diluted at 1:1000, 4° over night



+86-27-59760950

ELKbio@ELKbiotech.com

www.elkbiotech.com

23-2, No.388 Gaoxin 2nd Road, Wuhan East Lake Hi-tech Development Zone, Hubei, P.R.C