



CNDH2 rabbit pAb

Cat No.:ES17350

For research use only

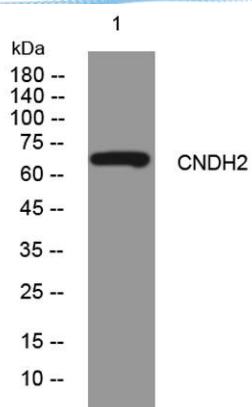
Overview

Product Name	CNDH2 rabbit pAb
Host species	Rabbit
Applications	WB
Species Cross-Reactivity	Human; Mouse;Rat
Recommended dilutions	WB 1: 500-2000
Immunogen	Synthesized peptide derived from human CNDH2 AA range: 501-551
Specificity	This antibody detects endogenous levels of CNDH2 at Human/Mouse/Rat
Formulation	Liquid in PBS containing 50% glycerol, 0.5% BSA and 0.02% sodium azide.
Storage	Store at -20°C. Avoid repeated freeze-thaw cycles.
Protein Name	CNDH2
Gene Name	NCAPH2 CAPH2
Cellular localization	Nucleus . Chromosome . Distributed along the arms of chromosomes assembled in vivo and in vitro.
Purification	The antibody was affinity-purified from rabbit antiserum by affinity-chromatography using epitope-specific immunogen.
Clonality	Polyclonal
Concentration	1 mg/ml
Observed band	
Human Gene ID	29781
Human Swiss-Prot Number	Q6IBW4
Alternative Names	
Background	This gene encodes one of the non-SMC subunits of the condensin II complex. This complex plays an essential role in mitotic chromosome assembly. Alternate splicing of this gene results in multiple transcript variants.[provided by RefSeq, May 2010],





ELK Biotechnology



Western blot analysis of lysates from HeLa cells, primary antibody was diluted at 1:1000, 4° over night



+86-27-59760950

ELKbio@ELKbiotech.com

www.elkbiotech.com

23-2, No.388 Gaoxin 2nd Road, Wuhan East Lake Hi-tech Development Zone, Hubei, P.R.C