

CPNE4 rabbit pAb

Cat No.:ES17259

For research use only

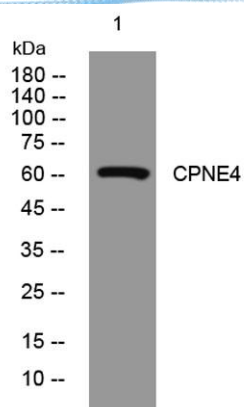
Overview

Product Name	CPNE4 rabbit pAb
Host species	Rabbit
Applications	WB
Species Cross-Reactivity	Human; Mouse
Recommended dilutions	WB 1: 500-2000
Immunogen	Synthesized peptide derived from human CPNE4 AA range: 476-526
Specificity	This antibody detects endogenous levels of CPNE4 at Human/Mouse
Formulation	Liquid in PBS containing 50% glycerol, 0.5% BSA and 0.02% sodium azide.
Storage	Store at -20°C. Avoid repeated freeze-thaw cycles.
Protein Name	CPNE4
Gene Name	CPNE4
Cellular localization	extracellular exosome,
Purification	The antibody was affinity-purified from rabbit antiserum by affinity-chromatography using epitope-specific immunogen.
Clonality	Polyclonal
Concentration	1 mg/ml
Observed band	
Human Gene ID	131034
Human Swiss-Prot Number	Q96A23
Alternative Names	
Background	This gene belongs to the highly conserved copine family. It encodes a calcium-dependent, phospholipid-binding protein, which may be involved in membrane trafficking, mitogenesis and development. Alternative splicing results in multiple transcript variants. [provided by RefSeq, Jan 2014],





ELK Biotechnology



Western blot analysis of lysates from HpeG2 cells, primary antibody was diluted at 1:1000, 4° over night



+86-27-59760950

ELKbio@ELKbiotech.com

www.elkbiotech.com

23-2, No.388 Gaoxin 2nd Road, Wuhan East Lake Hi-tech Development Zone, Hubei, P.R.C.