

CRNL1 rabbit pAb

Cat No.:ES17216

For research use only

Overview

Product Name	CRNL1 rabbit pAb
Host species	Rabbit
Applications	WB
Species Cross-Reactivity	Human; Mouse;Rat
Recommended dilutions	WB 1: 500-2000
Immunogen	Synthesized peptide derived from human CRNL1 AA range: 710-760
Specificity	This antibody detects endogenous levels of CRNL1 at Human/Mouse/Rat
Formulation	Liquid in PBS containing 50% glycerol, 0.5% BSA and 0.02% sodium azide.
Storage	Store at -20°C. Avoid repeated freeze-thaw cycles.
Protein Name	CRNL1
Gene Name	CRNKL1 CRN CGI-201 MSTP021
Cellular localization	Nucleus . Nucleus speckle . Colocalizes with core spliceosomal snRNP proteins (PubMed:12084575). .
Purification	The antibody was affinity-purified from rabbit antiserum by affinity-chromatography using epitope-specific immunogen.
Clonality	Polyclonal
Concentration	1 mg/ml
Observed band	
Human Gene ID	51340
Human Swiss-Prot Number	Q9BZJ0
Alternative Names	
Background	The crooked neck (crn) gene of Drosophila is essential for embryogenesis and is thought to be involved in cell cycle progression and pre-mRNA splicing. A protein encoded by this human locus has been found to localize to pre-mRNA splicing complexes in the nucleus and is necessary for pre-mRNA splicing. Alternatively spliced transcript variants have been described. [provided by RefSeq,

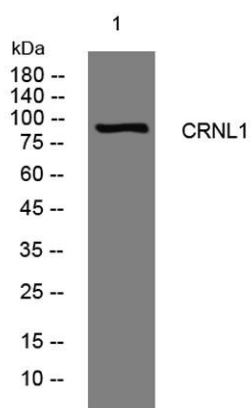




ELK Biotechnology

Jul 2013],

Western blot analysis of lysates from A549 cells, primary antibody was diluted at 1:1000, 4° over night



+86-27-59760950

ELKbio@ELKbiotech.com

www.elkbiotech.com

23-2, No.388 Gaoxin 2nd Road, Wuhan East Lake Hi-tech Development Zone, Hubei, P.R.C.