



Arrdc1 rabbit pAb

Cat No.:ES1708

For research use only

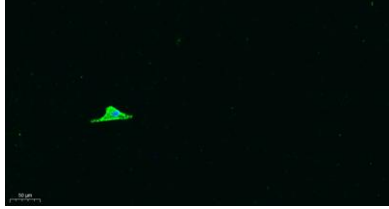
Overview

Product Name	Arrdc1 rabbit pAb
Host species	Rabbit
Applications	WB IF;ELISA
Species Cross-Reactivity	Human;Mouse;Rat
Recommended dilutions	WB 1:500-2000 IF 1:100-300 ELISA 1:5000-20000 Not yet tested in other applications.
Immunogen	The antiserum was produced against synthesized peptide derived from human ARRD1. AA range:167-216
Specificity	Arrdc1 Polyclonal Antibody detects endogenous levels of Arrdc1 protein.
Formulation	Liquid in PBS containing 50% glycerol, 0.5% BSA and 0.02% sodium azide.
Storage	Store at -20°C. Avoid repeated freeze-thaw cycles.
Protein Name	Arrestin domain-containing protein 1
Gene Name	ARRDC1
Cellular localization	Cell membrane . Also found in extracellular vesicles different from exosomes. .
Purification	The antibody was affinity-purified from rabbit antiserum by affinity-chromatography using epitope-specific immunogen.
Clonality	Polyclonal
Concentration	1 mg/ml
Observed band	48kD
Human Gene ID	92714
Human Swiss-Prot Number	Q8N5I2
Alternative Names	ARRDC1; Arrestin domain-containing protein 1
Background	similarity:Belongs to the arrestin family.,

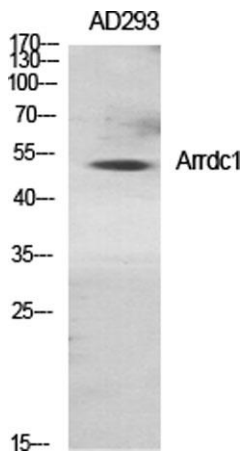




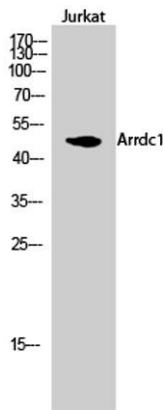
Immunofluorescence analysis of A549. 1,primary Antibody was diluted at 1:200(4°C overnight). 2, Goat Anti Rabbit IgG (H&L) - Alexa Fluor 488 Secondary antibody was diluted at 1:1000(room temperature, 50min).3, Picture B: DAPI(blue) 10min.



Western Blot analysis of various cells using Arrdc1 Polyclonal Antibody diluted at 1:1000

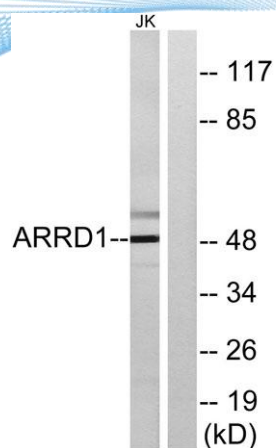


Western Blot analysis of Jurkat cells using Arrdc1 Polyclonal Antibody diluted at 1:1000





ELK Biotechnology



Western blot analysis of lysates from Jurkat cells, using ARR1D1 Antibody. The lane on the right is blocked with the synthesized peptide.



+86-27-59760950

ELKbio@ELKbiotech.com

www.elkbiotech.com

23-2, No.388 Gaoxin 2nd Road, Wuhan East Lake Hi-tech Development Zone, Hubei, P.R.C.