

# DAB2 rabbit pAb

Cat No.:ES17027

For research use only

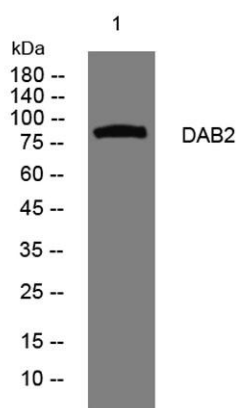
## Overview

Product Name	DAB2 rabbit pAb
Host species	Rabbit
Applications	WB
Species Cross-Reactivity	Human; Mouse;Rat
Recommended dilutions	WB 1:500-2000
Immunogen	Synthesized peptide derived from human DAB2 AA range: 683-733
Specificity	This antibody detects endogenous levels of DAB2 at Human/Mouse/Rat
Formulation	Liquid in PBS containing 50% glycerol, 0.5% BSA and 0.02% sodium azide.
Storage	Store at -20°C. Avoid repeated freeze-thaw cycles.
Protein Name	DAB2
Gene Name	DAB2 DOC2
Cellular localization	Cytoplasm. Cytoplasmic vesicle, clathrin-coated vesicle membrane. Membrane, clathrin-coated pit. Colocalizes with large insert-containing isoforms of MYO6 at clathrin-coated pits/vesicles. During mitosis is progressively displaced from the membrane and tr
Purification	The antibody was affinity-purified from rabbit antiserum by affinity-chromatography using epitope-specific immunogen.
Clonality	Polyclonal
Concentration	1 mg/ml
Observed band	85kD
Human Gene ID	1601
Human Swiss-Prot Number	P98082
Alternative Names	Disabled homolog 2 (DOC-2) (Differentially-expressed protein 2)
Background	This gene encodes a mitogen-responsive phosphoprotein. It is expressed in normal ovarian epithelial cells, but is down-regulated or absent





from ovarian carcinoma cell lines, suggesting its role as a tumor suppressor. This protein binds to the SH3 domains of GRB2, an adaptor protein that couples tyrosine kinase receptors to SOS (a guanine nucleotide exchange factor for Ras), via its C-terminal proline-rich sequences, and may thus modulate growth factor/Ras pathways by competing with SOS for binding to GRB2. Alternatively spliced transcript variants encoding different isoforms have been found for this gene. [provided by RefSeq, Oct 2011],



Western blot analysis of lysates from DU145 cells, primary antibody was diluted at 1:1000, 4° over night

