

DBR1 rabbit pAb

Cat No.:ES17004

For research use only

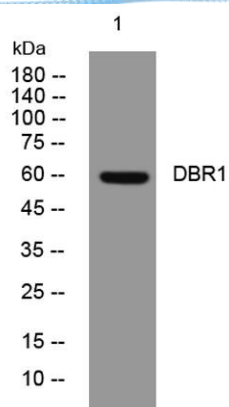
Overview

Product Name	DBR1 rabbit pAb
Host species	Rabbit
Applications	WB
Species Cross-Reactivity	Human; Mouse
Recommended dilutions	WB 1: 500-2000
Immunogen	Synthesized peptide derived from human DBR1 AA range: 230-280
Specificity	This antibody detects endogenous levels of DBR1 at Human/Mouse
Formulation	Liquid in PBS containing 50% glycerol, 0.5% BSA and 0.02% sodium azide.
Storage	Store at -20°C. Avoid repeated freeze-thaw cycles.
Protein Name	DBR1
Gene Name	DBR1
Cellular localization	Nucleus .
Purification	The antibody was affinity-purified from rabbit antiserum by affinity-chromatography using epitope-specific immunogen.
Clonality	Polyclonal
Concentration	1 mg/ml
Observed band	
Human Gene ID	51163
Human Swiss-Prot Number	Q9UK59
Alternative Names	
Background	The protein encoded by this gene is an RNA lariat debranching enzyme that hydrolyzes 2'-5' prime branched phosphodiester bonds. The encoded protein specifically targets the bonds at the branch point of excised lariat intron RNA, converting them to linear molecules that are then degraded. This protein may also be involved in retroviral replication. [provided by RefSeq, Nov 2011],





ELK Biotechnology



Western blot analysis of lysates from SW480 cells, primary antibody was diluted at 1:1000, 4° over night



+86-27-59760950

ELKbio@ELKbiotech.com

www.elkbiotech.com

23-2, No.388 Gaoxin 2nd Road, Wuhan East Lake Hi-tech Development Zone, Hubei, P.R.C.