

DGCR8 rabbit pAb

Cat No.:ES16953

For research use only

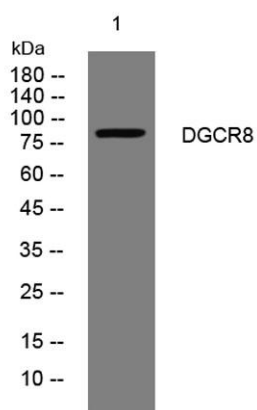
Overview

Product Name	DGCR8 rabbit pAb
Host species	Rabbit
Applications	WB
Species Cross-Reactivity	Human; Mouse
Recommended dilutions	WB 1:500-2000
Immunogen	Synthesized peptide derived from human DGCR8 AA range: 467-517
Specificity	This antibody detects endogenous levels of DGCR8 at Human/Mouse
Formulation	Liquid in PBS containing 50% glycerol, 0.5% BSA and 0.02% sodium azide.
Storage	Store at -20°C. Avoid repeated freeze-thaw cycles.
Protein Name	DGCR8
Gene Name	DGCR8 C22orf12 DGCRK6 LP4941
Cellular localization	Nucleus . Nucleus, nucleolus . Colocalizes with nucleolin and DROSHA in the nucleolus. Mostly detected in the nucleolus as electron-dense granular patches around the fibrillar center (FC) and granular component (GC). Also detected in the nucleoplasm as sm
Purification	The antibody was affinity-purified from rabbit antiserum by affinity-chromatography using epitope-specific immunogen.
Clonality	Polyclonal
Concentration	1 mg/ml
Observed band	85kD
Human Gene ID	54487
Human Swiss-Prot Number	Q8WYQ5
Alternative Names	Microprocessor complex subunit DGCR8 (DiGeorge syndrome critical region 8)
Background	This gene encodes a subunit of the microprocessor complex which mediates the biogenesis of microRNAs from the primary microRNA transcript.





The encoded protein is a double-stranded RNA binding protein that functions as the non-catalytic subunit of the microprocessor complex. This protein is required for binding the double-stranded RNA substrate and facilitates cleavage of the RNA by the ribonuclease III protein, Drosha. Alternate splicing results in multiple transcript variants. [provided by RefSeq, Jun 2010],



Western blot analysis of lysates from THP-1 cells, primary antibody was diluted at 1:1000, 4° over night

