



# DOC10 rabbit pAb

Cat No.:ES16919

For research use only

## Overview

<b>Product Name</b>	DOC10 rabbit pAb
<b>Host species</b>	Rabbit
<b>Applications</b>	WB
<b>Species Cross-Reactivity</b>	Human; Mouse
<b>Recommended dilutions</b>	WB 1: 500-2000
<b>Immunogen</b>	Synthesized peptide derived from human DOC10 AA range: 2051-2101
<b>Specificity</b>	This antibody detects endogenous levels of DOC10 at Human/Mouse
<b>Formulation</b>	Liquid in PBS containing 50% glycerol, 0.5% BSA and 0.02% sodium azide.
<b>Storage</b>	Store at -20°C. Avoid repeated freeze-thaw cycles.
<b>Protein Name</b>	DOC10
<b>Gene Name</b>	DOCK10 KIAA0694 ZIZ3
<b>Cellular localization</b>	Nucleus . Cytoplasm . Cell projection, dendritic spine .
<b>Purification</b>	The antibody was affinity-purified from rabbit antiserum by affinity-chromatography using epitope-specific immunogen.
<b>Clonality</b>	Polyclonal
<b>Concentration</b>	1 mg/ml
<b>Observed band</b>	
<b>Human Gene ID</b>	55619
<b>Human Swiss-Prot Number</b>	Q96BY6
<b>Alternative Names</b>	
<b>Background</b>	This gene encodes a member of the dedicator of cytokinesis protein family. Members of this family are guanosine nucleotide exchange factors for Rho GTPases and defined by the presence of conserved DOCK-homology regions. The encoded protein belongs to the D (or Zizimin) subfamily of DOCK proteins, which also contain an N-terminal pleckstrin homology domain. Alternatively spliced transcript

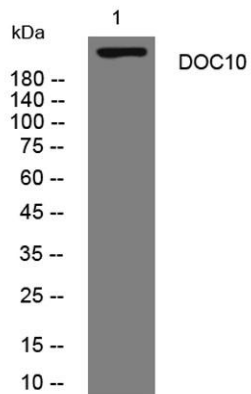




**ELK Biotechnology**

variants that encode different isoforms have been described. [provided by RefSeq, Mar 2014],

Western blot analysis of lysates from Jarkat cells, primary antibody was diluted at 1:1000, 4° over night



+86-27-59760950

[ELKbio@ELKbiotech.com](mailto:ELKbio@ELKbiotech.com)

[www.elkbiotech.com](http://www.elkbiotech.com)

23-2, No.388 Gaoxin 2nd Road, Wuhan East Lake Hi-tech Development Zone, Hubei, P.R.C