



DPY30 rabbit pAb

Cat No.:ES16905

For research use only

Overview

Product Name	DPY30 rabbit pAb
Host species	Rabbit
Applications	IHC;IF
Species Cross-Reactivity	Human; Mouse;Rat
Recommended dilutions	IHC-p 1: 50-200
Immunogen	Synthesized peptide derived from human DPY30 AA range: 39-89
Specificity	This antibody detects endogenous levels of DPY30 at Human/Mouse/Rat
Formulation	Liquid in PBS containing 50% glycerol, 0.5% BSA and 0.02% sodium azide.
Storage	Store at -20°C. Avoid repeated freeze-thaw cycles.
Protein Name	DPY30
Gene Name	DPY30
Cellular localization	Nucleus . Golgi apparatus, trans-Golgi network . Associated with chromatin at regions enriched in histone H3 trimethylated at 'Lys-4. Highly enriched in gene promoter regions and 5' UTRs, but not in downstream regions of genes or 3' UTRs (By similarity).
Purification	The antibody was affinity-purified from rabbit antiserum by affinity-chromatography using epitope-specific immunogen.
Clonality	Polyclonal
Concentration	1 mg/ml
Observed band	
Human Gene ID	84661
Human Swiss-Prot Number	Q9C005
Alternative Names	
Background	This gene encodes an integral core subunit of the SET1/MLL family of H3K4 methyltransferases. The encoded protein directly controls cell cycle regulators and plays an important role in the

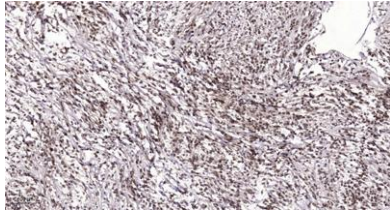




ELK Biotechnology

proliferation and differentiation of human hematopoietic progenitor cells. [provided by RefSeq, Mar 2016],

Immunohistochemical analysis of paraffin-embedded human Colon cancer. 1, Antibody was diluted at 1:200(4° overnight). 2, Tris-EDTA,pH9.0 was used for antigen retrieval. 3,Secondary antibody was diluted at 1:200(room temperature, 45min).



+86-27-59760950

ELKbio@ELKbiotech.com

www.elkbiotech.com

23-2, No.388 Gaoxin 2nd Road,Wuhan East Lake Hi-tech Development Zone, Hubei , P.R.C