

DRP2 rabbit pAb

Cat No.:ES16894

For research use only

Overview

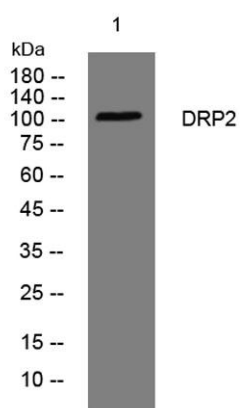
Product Name	DRP2 rabbit pAb
Host species	Rabbit
Applications	WB
Species Cross-Reactivity	Human; Mouse;Rat
Recommended dilutions	WB 1:500-2000
Immunogen	Synthesized peptide derived from human DRP2 AA range: 437-487
Specificity	This antibody detects endogenous levels of DRP2 at Human/Mouse/Rat
Formulation	Liquid in PBS containing 50% glycerol, 0.5% BSA and 0.02% sodium azide.
Storage	Store at -20°C. Avoid repeated freeze-thaw cycles.
Protein Name	DRP2
Gene Name	DRP2
Cellular localization	Cell junction, synapse, postsynaptic density . Cell projection, dendrite . Perikaryon . Cell membrane ; Peripheral membrane protein . Detected in Schwann cells at periaxonal myelin membranes. .
Purification	The antibody was affinity-purified from rabbit antiserum by affinity-chromatography using epitope-specific immunogen.
Clonality	Polyclonal
Concentration	1 mg/ml
Observed band	105kD
Human Gene ID	1821
Human Swiss-Prot Number	Q13474
Alternative Names	Dystrophin-related protein 2 (DRP-2)
Background	Members of the dystrophin family of proteins perform a critical role in the maintenance of membrane-associated complexes at points of intercellular contact in vertebrate cells. The protein encoded by this gene is predicted to resemble certain short C-terminal isoforms of dystrophin and





ELK Biotechnology

dystrophin-related protein 1 (DRP1 or utrophin).
DRP2 is expressed principally in the brain and spinal cord. Two transcript variants encoding different isoforms have been found for this gene. [provided by RefSeq, Jan 2010],



Western blot analysis of lysates from A431 cells, primary antibody was diluted at 1:1000, 4°over night



+86-27-59760950

ELKbio@ELKbiotech.com

www.elkbiotech.com

23-2, No.388 Gaoxin 2nd Road,Wuhan East Lake Hi-tech Development Zone, Hubei , P.R.C