



DSC1 rabbit pAb

Cat No.:ES16891

For research use only

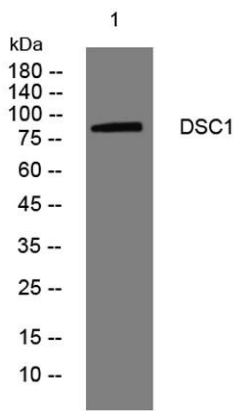
Overview

Product Name	DSC1 rabbit pAb
Host species	Rabbit
Applications	WB
Species Cross-Reactivity	Human; Mouse
Recommended dilutions	WB 1: 500-2000
Immunogen	Synthesized peptide derived from human DSC1 AA range: 749-799
Specificity	This antibody detects endogenous levels of DSC1 at Human/Mouse
Formulation	Liquid in PBS containing 50% glycerol, 0.5% BSA and 0.02% sodium azide.
Storage	Store at -20°C. Avoid repeated freeze-thaw cycles.
Protein Name	DSC1
Gene Name	DSC1 CDHF1
Cellular localization	Cell membrane; Single-pass type I membrane protein. Cell junction, desmosome.
Purification	The antibody was affinity-purified from rabbit antiserum by affinity-chromatography using epitope-specific immunogen.
Clonality	Polyclonal
Concentration	1 mg/ml
Observed band	
Human Gene ID	1823
Human Swiss-Prot Number	Q08554
Alternative Names	
Background	The protein encoded by this gene is a calcium-dependent glycoprotein that is a member of the desmocollin subfamily of the cadherin superfamily. These desmosomal family members, along with the desmogleins, are found primarily in epithelial cells where they constitute the adhesive proteins of the desmosome cell-cell junction and are required for cell adhesion and desmosome





formation. A subtype of IgA pemphigus, a life-threatening autoimmune disease, is characterized by the presence of autoantibodies that target the encoded protein. The desmosomal family members are arranged in two clusters on chromosome 18. Alternative splicing of this gene results in multiple transcript variants. At least one of these variants encodes a preprotein that is proteolytically processed to generate the mature protein. [provided by RefSeq, Nov 2015],



Western blot analysis of lysates from 293T cells, primary antibody was diluted at 1:1000, 4° over night

