

DU4L7 rabbit pAb

Cat No.:ES16882

For research use only

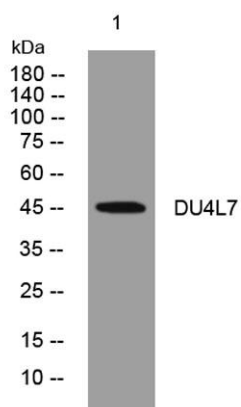
Overview

Product Name	DU4L7 rabbit pAb
Host species	Rabbit
Applications	WB
Species Cross-Reactivity	Human;Rat;Mouse;
Recommended dilutions	WB 1: 500-2000
Immunogen	Synthesized peptide derived from human DU4L7 AA range: 314-364
Specificity	This antibody detects endogenous levels of DU4L7 at Human
Formulation	Liquid in PBS containing 50% glycerol, 0.5% BSA and 0.02% sodium azide.
Storage	Store at -20°C. Avoid repeated freeze-thaw cycles.
Protein Name	DU4L7
Gene Name	DUX4L7
Cellular localization	Nucleus .
Purification	The antibody was affinity-purified from rabbit antiserum by affinity-chromatography using epitope-specific immunogen.
Clonality	Polyclonal
Concentration	1 mg/ml
Observed band	
Human Gene ID	
Human Swiss-Prot Number	P0CJ90
Alternative Names	
Background	This gene is located within a D4Z4 repeat array in the subtelomeric region of chromosome 4q. The D4Z4 repeat is polymorphic in length and a similar D4Z4 repeat array has been identified on chromosome 10. Each D4Z4 repeat unit has an open reading frame (named DUX4) that encodes two homeoboxes; the repeat-array and ORF is conserved in other mammals. There is no evidence for transcription of the gene at this locus though





RT-PCR and in vitro expression experiments indicate that a telomeric paralog of this gene is transcribed in some haplotypes. Contraction of the macrosatellite repeat causes autosomal dominant facioscapulohumeral muscular dystrophy (FSHD). [provided by RefSeq, Jun 2014],



Western blot analysis of lysates from HpeG2 cells, primary antibody was diluted at 1:1000, 4° over night

