

DUS15 rabbit pAb

Cat No.:ES16879

For research use only

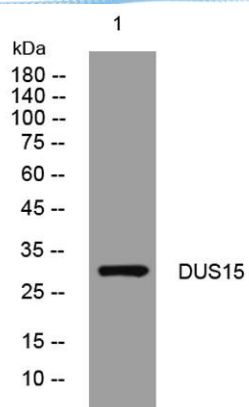
Overview

Product Name	DUS15 rabbit pAb
Host species	Rabbit
Applications	WB
Species Cross-Reactivity	Human; Mouse
Recommended dilutions	WB 1: 500-2000
Immunogen	Synthesized peptide derived from human DUS15 AA range: 15-65
Specificity	This antibody detects endogenous levels of DUS15 at Human/Mouse
Formulation	Liquid in PBS containing 50% glycerol, 0.5% BSA and 0.02% sodium azide.
Storage	Store at -20°C. Avoid repeated freeze-thaw cycles.
Protein Name	DUS15
Gene Name	DUSP15 C20orf57 VH1
Cellular localization	Cytoplasm .; [Isoform 3]: Cell membrane; Lipid-anchor; Cytoplasmic side.
Purification	The antibody was affinity-purified from rabbit antiserum by affinity-chromatography using epitope-specific immunogen.
Clonality	Polyclonal
Concentration	1 mg/ml
Observed band	
Human Gene ID	128853
Human Swiss-Prot Number	Q9H1R2
Alternative Names	
Background	The protein encoded by this gene has both protein-tyrosine phosphatase activity and serine/threonine-specific phosphatase activity, and therefore is known as a dual specificity phosphatase. This protein may function in the differentiation of oligodendrocytes. Alternative splicing results in multiple transcript variants. [provided by RefSeq, Feb 2016],





ELK Biotechnology



Western blot analysis of lysates from U2OS cells, primary antibody was diluted at 1:1000, 4° over night



+86-27-59760950

ELKbio@ELKbiotech.com

www.elkbiotech.com

23-2, No.388 Gaoxin 2nd Road, Wuhan East Lake Hi-tech Development Zone, Hubei, P.R.C.