

DUX3 rabbit pAb

Cat No.:ES16876

For research use only

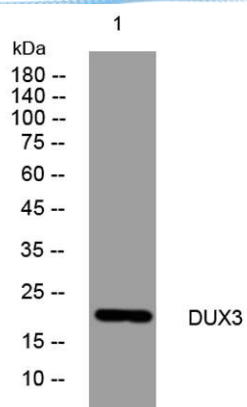
Overview

Product Name	DUX3 rabbit pAb
Host species	Rabbit
Applications	WB
Species Cross-Reactivity	Human;Rat;Mouse;
Recommended dilutions	WB 1: 500-2000
Immunogen	Synthesized peptide derived from human DUX3 AA range: 27-77
Specificity	This antibody detects endogenous levels of DUX3 at Human
Formulation	Liquid in PBS containing 50% glycerol, 0.5% BSA and 0.02% sodium azide.
Storage	Store at -20°C. Avoid repeated freeze-thaw cycles.
Protein Name	DUX3
Gene Name	DUX3
Cellular localization	Nucleus .
Purification	The antibody was affinity-purified from rabbit antiserum by affinity-chromatography using epitope-specific immunogen.
Clonality	Polyclonal
Concentration	1 mg/ml
Observed band	
Human Gene ID	26582
Human Swiss-Prot Number	Q96PT4
Alternative Names	
Background	The human genome contains hundreds of repeats of the 3.3-kb family in regions associated with heterochromatin. The DUX gene family, including DUX3, resides within these 3.3-kb repeated elements (Beckers et al., 2001 [PubMed 11245978]). See DUX4 (MIM 606009).[supplied by OMIM, Mar 2008],





ELK Biotechnology



Western blot analysis of lysates from K562 cells, primary antibody was diluted at 1:1000, 4° over night



+86-27-59760950

ELKbio@ELKbiotech.com

www.elkbiotech.com

23-2, No.388 Gaoxin 2nd Road, Wuhan East Lake Hi-tech Development Zone, Hubei, P.R.C.