



ApoL2 rabbit pAb

Cat No.:ES1683

For research use only

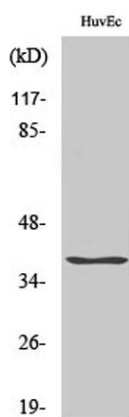
Overview

Product Name	ApoL2 rabbit pAb
Host species	Rabbit
Applications	WB;IHC;IF;ELISA
Species Cross-Reactivity	Human;Rat;Mouse;
Recommended dilutions	Western Blot: 1/500 - 1/2000. Immunohistochemistry: 1/100 - 1/300. Immunofluorescence: 1/200 - 1/1000. ELISA: 1/40000. Not yet tested in other applications.
Immunogen	The antiserum was produced against synthesized peptide derived from human APOL2. AA range:191-240
Specificity	ApoL2 Polyclonal Antibody detects endogenous levels of ApoL2 protein.
Formulation	Liquid in PBS containing 50% glycerol, 0.5% BSA and 0.02% sodium azide.
Storage	Store at -20°C. Avoid repeated freeze-thaw cycles.
Protein Name	Apolipoprotein L2
Gene Name	APOL2
Cellular localization	Cytoplasm .
Purification	The antibody was affinity-purified from rabbit antiserum by affinity-chromatography using epitope-specific immunogen.
Clonality	Polyclonal
Concentration	1 mg/ml
Observed band	37kD
Human Gene ID	23780
Human Swiss-Prot Number	Q9BQE5
Alternative Names	APOL2; Apolipoprotein L2; Apolipoprotein L-II; ApoL-II
Background	This gene is a member of the apolipoprotein L gene family. The encoded protein is found in the cytoplasm, where it may affect the movement of lipids or allow the binding of lipids to organelles.



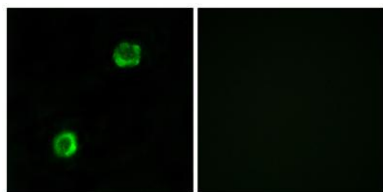


Two transcript variants encoding the same protein have been found for this gene. [provided by RefSeq, Jul 2008],

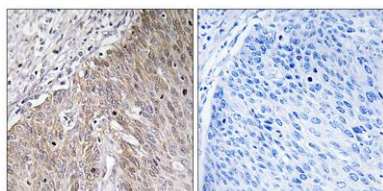


Western Blot analysis of various cells using ApoL2 Polyclonal Antibody

Immunofluorescence analysis of MCF7 cells, using APOL2 Antibody. The picture on the right is blocked with the synthesized peptide.

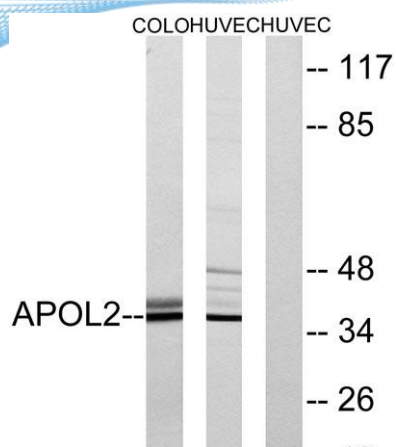


Immunohistochemistry analysis of paraffin-embedded human cervix carcinoma tissue, using APOL2 Antibody. The picture on the right is blocked with the synthesized peptide.





ELK Biotechnology



Western blot analysis of lysates from HUVEC and COLO cells, using APOL2 Antibody. The lane on the right is blocked with the synthesized peptide.



+86-27-59760950

ELKbio@ELKbiotech.com

www.elkbiotech.com

23-2, No.388 Gaoxin 2nd Road, Wuhan East Lake Hi-tech Development Zone, Hubei, P.R.C