



API5 rabbit pAb

Cat No.:ES1678

For research use only

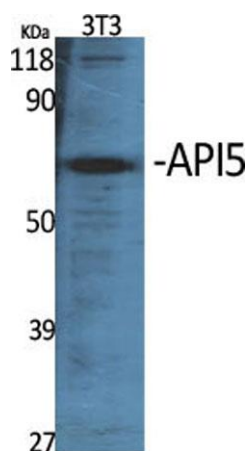
Overview

Product Name	API5 rabbit pAb
Host species	Rabbit
Applications	WB;IHC;IF;ELISA
Species Cross-Reactivity	Human;Mouse
Recommended dilutions	Western Blot: 1/500 - 1/2000. Immunohistochemistry: 1/100 - 1/300. ELISA: 1/20000. Not yet tested in other applications.
Immunogen	The antiserum was produced against synthesized peptide derived from human API-5. AA range:421-470
Specificity	API5 Polyclonal Antibody detects endogenous levels of API5 protein.
Formulation	Liquid in PBS containing 50% glycerol, 0.5% BSA and 0.02% sodium azide.
Storage	Store at -20°C. Avoid repeated freeze-thaw cycles.
Protein Name	Apoptosis inhibitor 5
Gene Name	API5
Cellular localization	Nucleus . Cytoplasm . Mainly nuclear. Can also be cytoplasmic.; [Isoform 3]: Cytoplasm.
Purification	The antibody was affinity-purified from rabbit antiserum by affinity-chromatography using epitope-specific immunogen.
Clonality	Polyclonal
Concentration	1 mg/ml
Observed band	58kD
Human Gene ID	8539
Human Swiss-Prot Number	Q9BZZ5
Alternative Names	API5; MIG8; Apoptosis inhibitor 5; API-5; Antiapoptosis clone 11 protein; AAC-11; Cell migration-inducing gene 8 protein; Fibroblast growth factor 2-interacting factor; FIF; Protein XAGL
Background	This gene encodes an apoptosis inhibitory protein whose expression prevents apoptosis after growth

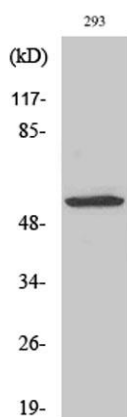




factor deprivation. This protein suppresses the transcription factor E2F1-induced apoptosis and also interacts with, and negatively regulates Acinus, a nuclear factor involved in apoptotic DNA fragmentation. Its depletion enhances the cytotoxic action of the chemotherapeutic drugs. Multiple alternatively spliced transcript variants encoding different isoforms have been identified. [provided by RefSeq, Aug 2011],

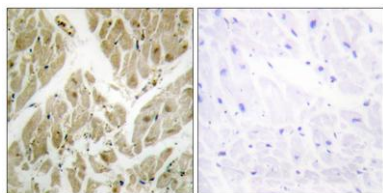


Western Blot analysis of various cells using API5 Polyclonal Antibody diluted at 1:1000



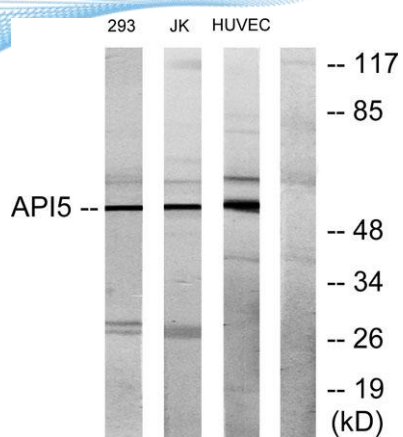
Western Blot analysis of HuvEc cells using API5 Polyclonal Antibody diluted at 1:1000

Immunohistochemistry analysis of paraffin-embedded human heart tissue, using API-5 Antibody. The picture on the right is blocked with the synthesized peptide.





ELK Biotechnology



Western blot analysis of lysates from 293, Jurkat, and HUVEC cells, using API-5 Antibody. The lane on the right is blocked with the synthesized peptide.



+86-27-59760950

ELKbio@ELKbiotech.com

www.elkbiotech.com

23-2, No.388 Gaoxin 2nd Road, Wuhan East Lake Hi-tech Development Zone, Hubei, P.R.C.