



# EMAL4 rabbit pAb

Cat No.:ES16756

For research use only

## Overview

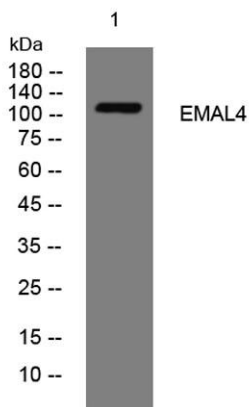
<b>Product Name</b>	EMAL4 rabbit pAb
<b>Host species</b>	Rabbit
<b>Applications</b>	WB
<b>Species Cross-Reactivity</b>	Human; Mouse
<b>Recommended dilutions</b>	WB 1: 500-2000
<b>Immunogen</b>	Synthesized peptide derived from human EMAL4 AA range: 398-448
<b>Specificity</b>	This antibody detects endogenous levels of EMAL4 at Human/Mouse
<b>Formulation</b>	Liquid in PBS containing 50% glycerol, 0.5% BSA and 0.02% sodium azide.
<b>Storage</b>	Store at -20°C. Avoid repeated freeze-thaw cycles.
<b>Protein Name</b>	EMAL4
<b>Gene Name</b>	EML4 C2orf2 EMAPL4
<b>Cellular localization</b>	Cytoplasm, cytoskeleton . Cytoplasm . Cytoplasm, cytoskeleton, spindle . Cytoplasm, cytoskeleton, microtubule organizing center . Midbody . Localizes to microtubules (MTs) during interphase with a significantly reduced affinity for MTs during mitosis. .
<b>Purification</b>	The antibody was affinity-purified from rabbit antiserum by affinity-chromatography using epitope-specific immunogen.
<b>Clonality</b>	Polyclonal
<b>Concentration</b>	1 mg/ml
<b>Observed band</b>	
<b>Human Gene ID</b>	27436
<b>Human Swiss-Prot Number</b>	Q9HC35
<b>Alternative Names</b>	
<b>Background</b>	This gene is a member of the echinoderm microtubule associated protein-like family. The encoded WD-repeat protein may be involved in microtubule formation. Abnormal fusion of parts of





**ELK Biotechnology**

this gene with portions of the anaplastic lymphoma receptor tyrosine kinase gene, which generates EML4-ALK fusion transcripts, is one of the primary mutations associated with non-small cell lung cancer. Alternative splicing of this gene results in two transcript variants. [provided by RefSeq, Jan 2015],



Western blot analysis of lysates from Jarkat cells, primary antibody was diluted at 1:1000, 4°over night



+86-27-59760950

[ELKbio@ELKbiotech.com](mailto:ELKbio@ELKbiotech.com)

[www.elkbiotech.com](http://www.elkbiotech.com)

23-2, No.388 Gaoxin 2nd Road,Wuhan East Lake Hi-tech Development Zone, Hubei , P.R.C